

Product datasheet for **TA330960**

TRIML2 Rabbit Polyclonal Antibody

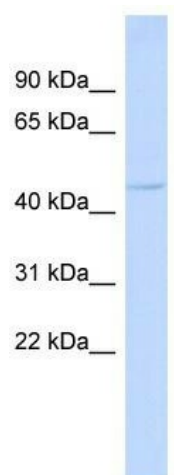
Product data:

Product Type:	Primary Antibodies
Applications:	WB
Recommended Dilution:	WB
Reactivity:	Human
Host:	Rabbit
Isotype:	IgG
Clonality:	Polyclonal
Immunogen:	The immunogen for anti-TRIML2 antibody: synthetic peptide directed towards the middle region of human TRIML2. Synthetic peptide located within the following region: SEDLRTMRLRHGQQDGAGNPERLDFSAMVLAESFTSGRHYWEVDVEKAT
Formulation:	Liquid. Purified antibody supplied in 1x PBS buffer with 0.09% (w/v) sodium azide and 2% sucrose. <i>Note that this product is shipped as lyophilized powder to China customers.</i>
Conjugation:	Unconjugated
Storage:	Store at -20°C as received.
Stability:	Stable for 12 months from date of receipt.
Predicted Protein Size:	44 kDa
Gene Name:	tripartite motif family like 2
Database Link:	NP_775824 Entrez Gene 205860 Human Q8N7C3
Background:	The specific function of TRIML2 is not yet known.
Synonyms:	SPRYD6
Note:	Human: 100%
Protein Families:	Druggable Genome



[View online »](#)

Product images:



WB Suggested Anti-TRIML2 Antibody Titration:
0.2-1 ug/ml; ELISA Titer: 1:312500; Positive
Control: Human Muscle