

Product datasheet for **TA330959**

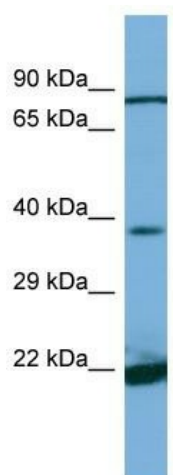
DIPK2A Rabbit Polyclonal Antibody

Product data:

Product Type:	Primary Antibodies
Applications:	WB
Recommended Dilution:	WB
Reactivity:	Human
Host:	Rabbit
Isotype:	IgG
Clonality:	Polyclonal
Immunogen:	The immunogen for Anti-C3orf58 antibody is: synthetic peptide directed towards the C-terminal region of HUMAN C3orf58. Synthetic peptide located within the following region: RHATWRGTSGLLHDPPSEIAKDGRLEALLDECANPKKRYGRFQAAKELR
Formulation:	Liquid. Purified antibody supplied in 1x PBS buffer with 0.09% (w/v) sodium azide and 2% sucrose.
Purification:	Affinity Purified
Conjugation:	Unconjugated
Storage:	Store at -20°C as received.
Stability:	Stable for 12 months from date of receipt.
Predicted Protein Size:	21 kDa
Gene Name:	chromosome 3 open reading frame 58
Database Link:	NP_001127942 Entrez Gene 205428 Human Q8NDZ4
Background:	The function of this protein remains unknown.
Synonyms:	DIA1; GoPro49; HASF
Note:	Dog: 100%; Pig: 100%; Rat: 100%; Horse: 100%; Human: 100%; Mouse: 100%; Bovine: 100%; Rabbit: 100%; Zebrafish: 100%; Guinea pig: 100%


[View online »](#)

Product images:



Host: Rabbit
Target Name: C3orf58
Sample Tissue: Jurkat Cell Lysate
Antibody Dilution: 1.0µg/ml

Host: Rabbit; Target Name: C3orf58; Sample Tissue: Jurkat Whole Cell lysates; Antibody Dilution: 1.0ug/ml