

Product datasheet for **TA330957**

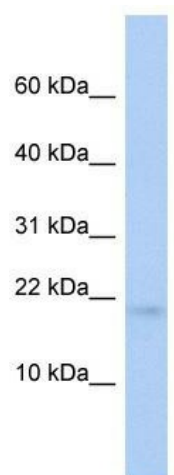
RFESD Rabbit Polyclonal Antibody

Product data:

Product Type:	Primary Antibodies
Applications:	WB
Recommended Dilution:	WB
Reactivity:	Human
Host:	Rabbit
Isotype:	IgG
Clonality:	Polyclonal
Immunogen:	The immunogen for anti-RFESD antibody: synthetic peptide directed towards the middle region of human RFESD. Synthetic peptide located within the following region: VVHDREVVIFYHKGEYHAMDIRCYHSGGPLHLGDIEDFDGRPCIVCPWHK
Formulation:	Liquid. Purified antibody supplied in 1x PBS buffer with 0.09% (w/v) sodium azide and 2% sucrose. <i>Note that this product is shipped as lyophilized powder to China customers.</i>
Purification:	Affinity Purified
Conjugation:	Unconjugated
Storage:	Store at -20°C as received.
Stability:	Stable for 12 months from date of receipt.
Predicted Protein Size:	18 kDa
Gene Name:	Rieske Fe-S domain containing
Database Link:	NP_775498 Entrez Gene 317671 Human Q8TAC1
Background:	The specific function of this protein remains unknown.
Synonyms:	Rieske (Fe-S) domain containing
Note:	Pig: 100%; Horse: 100%; Human: 100%; Mouse: 100%; Yeast: 100%; Guinea pig: 100%; Dog: 93%; Rat: 93%; Bovine: 93%; Rabbit: 93%



[View online »](#)

Product images:

WB Suggested Anti-RFESD Antibody Titration: 0.2-1 ug/ml; ELISA Titer: 1:62500; Positive Control: Human brain