

Product datasheet for **TA330956**

IL36RN Rabbit Polyclonal Antibody

Product data:

Product Type:	Primary Antibodies
Applications:	WB
Recommended Dilution:	WB
Reactivity:	Human
Host:	Rabbit
Isotype:	IgG
Clonality:	Polyclonal
Immunogen:	The immunogen for anti-IL1F5 antibody: synthetic peptide directed towards the middle region of human IL1F5. Synthetic peptide located within the following region: LTSSFESAAYPGWFLCTVPEADQPVRTQLPENGGWNAPITDFYFQQCD
Formulation:	Liquid. Purified antibody supplied in 1x PBS buffer with 0.09% (w/v) sodium azide and 2% sucrose. <i>Note that this product is shipped as lyophilized powder to China customers.</i>
Purification:	Affinity Purified
Conjugation:	Unconjugated
Storage:	Store at -20°C as received.
Stability:	Stable for 12 months from date of receipt.
Predicted Protein Size:	17 kDa
Gene Name:	interleukin 36 receptor antagonist
Database Link:	NP_775262 Entrez Gene 26525 Human Q9UBH0
Background:	The protein encoded by this gene is a member of the interleukin 1 cytokine family. This cytokine was shown to specifically inhibit the activation of NF-kappaB induced by interleukin 1 family, member 6 (IL1F6). This gene and eight other interleukin 1 family genes form a cytokine gene cluster on chromosome 2. Two alternatively spliced transcript variants encoding the same protein have been reported.
Synonyms:	FIL1; FIL1(DELTA); FIL1D; IL-36Ra; IL1F5; IL1HY1; IL1L1; IL1RP3; IL36RA; PSORP; PSORS14

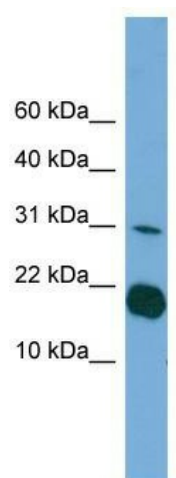


[View online »](#)

Note: Pig: 100%; Human: 100%; Guinea pig: 100%; Yeast: 90%; Mouse: 86%; Rat: 83%; Dog: 79%; Horse: 79%; Rabbit: 79%

Protein Families: Druggable Genome, Secreted Protein

Product images:



WB Suggested Anti-IL1F5 Antibody Titration: 0.2-1 ug/ml; ELISA Titer: 1:312500; Positive Control: Transfected 293T