

Product datasheet for **TA330955**

II36rn Rabbit Polyclonal Antibody

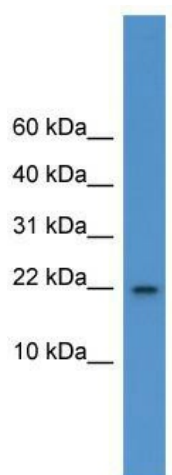
Product data:

Product Type:	Primary Antibodies
Applications:	WB
Recommended Dilution:	WB
Reactivity:	Rat
Host:	Rabbit
Isotype:	IgG
Clonality:	Polyclonal
Immunogen:	The immunogen for anti-II1f5 antibody: synthetic peptide corresponding to a region of Rat. Synthetic peptide located within the following region: LGTKESKSFYRRDLGLTSSFESAAYPGWFLCTSPEADQPVRTQISED
Formulation:	Liquid. Purified antibody supplied in 1x PBS buffer with 0.09% (w/v) sodium azide and 2% sucrose. <i>Note that this product is shipped as lyophilized powder to China customers.</i>
Purification:	Affinity Purified
Conjugation:	Unconjugated
Storage:	Store at -20°C as received.
Stability:	Stable for 12 months from date of receipt.
Predicted Protein Size:	17 kDa
Gene Name:	interleukin 36 receptor antagonist
Database Link:	NP_001101284 Entrez Gene 311783 Rat
Background:	The function of II1f5 remains unknown.
Synonyms:	II1f5
Note:	Dog: 100%; Human: 100%; Mouse: 100%; Rat: 93%; Horse: 93%; Rabbit: 92%; Pig: 77%; Guinea pig: 77%



[View online »](#)

Product images:



WB Suggested Anti-Il1f5 Antibody Titration: 0.2-1 ug/ml; ELISA Titer: 1:312500; Positive Control: Rat Brain