

## Product datasheet for **TA330954**

### ARMC3 Rabbit Polyclonal Antibody

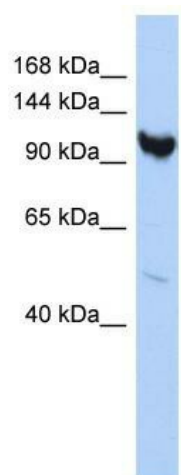
#### Product data:

Product Type:	Primary Antibodies
Applications:	WB
Recommended Dilution:	WB
Reactivity:	Human
Host:	Rabbit
Isotype:	IgG
Clonality:	Polyclonal
Immunogen:	The immunogen for anti-ARMC3 antibody: synthetic peptide directed towards the middle region of human ARMC3. Synthetic peptide located within the following region: YHFSAGFGSPIEDKSEPASGRNTVLSKSATKEKGWRKSKGKKEEEKVKEE
Formulation:	Liquid. Purified antibody supplied in 1x PBS buffer with 0.09% (w/v) sodium azide and 2% sucrose. <i>Note that this product is shipped as lyophilized powder to China customers.</i>
Purification:	Affinity Purified
Conjugation:	Unconjugated
Storage:	Store at -20°C as received.
Stability:	Stable for 12 months from date of receipt.
Predicted Protein Size:	96 kDa
Gene Name:	armadillo repeat containing 3
Database Link:	<a href="#">NP_775104</a> <a href="#">Entrez Gene 219681 Human</a> <a href="#">Q5W041</a>
Background:	The specific function of ARMC3 is not yet known. Armadillo/beta-catenin (CTNNB1; MIM 116806)-like (ARM) domains are imperfect 45-amino acid repeats involved in protein-protein interactions. ARM domain-containing proteins, such as ARMC3, function in signal transduction, development, cell adhesion and mobility, and tumor initiation and metastasis.
Synonyms:	CT81; KU-CT-1
Note:	Human: 100%; Rat: 86%; Horse: 86%; Dog: 79%; Pig: 79%; Mouse: 79%; Bovine: 79%



[View online »](#)

## Product images:



WB Suggested Anti-ARMC3 Antibody Titration:  
0.2-1 ug/ml; ELISA Titer: 1:1562500; Positive  
Control: HepG2 cell lysate