

Product datasheet for **TA330952**

SPAG8 Rabbit Polyclonal Antibody

Product data:

| | |
|-------------------------|---|
| Product Type: | Primary Antibodies |
| Applications: | WB |
| Recommended Dilution: | WB |
| Reactivity: | Human |
| Host: | Rabbit |
| Isotype: | IgG |
| Clonality: | Polyclonal |
| Immunogen: | The immunogen for anti-SPAG8 antibody: synthetic peptide directed towards the middle region of human SPAG8. Synthetic peptide located within the following region: PAPTKPHDYRQEQPETFWIQRAPQLPTWWPLPTQVPAEDYLTWKEWGFT |
| Formulation: | Liquid. Purified antibody supplied in 1x PBS buffer with 0.09% (w/v) sodium azide and 2% sucrose. <i>Note that this product is shipped as lyophilized powder to China customers.</i> |
| Purification: | Affinity Purified |
| Conjugation: | Unconjugated |
| Storage: | Store at -20°C as received. |
| Stability: | Stable for 12 months from date of receipt. |
| Predicted Protein Size: | 53 kDa |
| Gene Name: | sperm associated antigen 8 |
| Database Link: | NP_758516 Entrez Gene 26206 Human Q99932 |



[View online »](#)

Background:

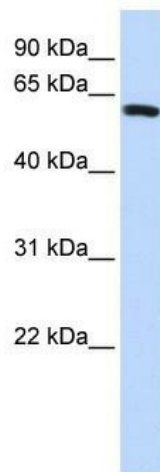
The correlation of anti-sperm antibodies with cases of unexplained infertility implicates a role for these antibodies in blocking fertilization. Improved diagnosis and treatment of immunologic infertility, as well as identification of proteins for targeted contraception, are dependent on the identification and characterization of relevant sperm antigens. SPAG8 is recognized by sperm agglutinating antibodies from an infertile woman. This protein is localized in germ cells of the testis at all stages of spermatogenesis and is localized to the acrosomal region of mature spermatozoa. The correlation of anti-sperm antibodies with cases of unexplained infertility implicates a role for these antibodies in blocking fertilization. Improved diagnosis and treatment of immunologic infertility, as well as identification of proteins for targeted contraception, are dependent on the identification and characterization of relevant sperm antigens. The protein encoded by this gene is recognized by sperm agglutinating antibodies from an infertile woman. This protein is localized in germ cells of the testis at all stages of spermatogenesis and is localized to the acrosomal region of mature spermatozoa. Alternatively spliced variants that encode different protein isoforms have been described but the full-length sequences of only two have been determined.

Synonyms:

BS-84; CILD28; CT142; HSD-1; hSMP-1; SMP1; SPAG3

Note:

Rat: 100%; Human: 100%; Mouse: 100%; Dog: 93%; Rabbit: 93%; Pig: 86%; Bovine: 79%

Product images:

WB Suggested Anti-SPAG8 Antibody Titration: 0.2-1 ug/ml; ELISA Titer: 1:1562500; Positive Control: Hela cell lysate