

Product datasheet for **TA330948**

SGK3 Rabbit Polyclonal Antibody

Product data:

Product Type:	Primary Antibodies
Applications:	IHC, WB
Recommended Dilution:	WB, IHC
Reactivity:	Human
Host:	Rabbit
Isotype:	IgG
Clonality:	Polyclonal
Immunogen:	The immunogen for anti-SGK3 antibody: synthetic peptide directed towards the N terminal of human SGK3. Synthetic peptide located within the following region: LYNHPDVRAFLQMDSPKHQSDPSEDEDERSSQKLHSTSQNINLGPSGNPH
Formulation:	Liquid. Purified antibody supplied in 1x PBS buffer with 0.09% (w/v) sodium azide and 2% sucrose. <i>Note that this product is shipped as lyophilized powder to China customers.</i>
Purification:	Affinity Purified
Conjugation:	Unconjugated
Storage:	Store at -20°C as received.
Stability:	Stable for 12 months from date of receipt.
Predicted Protein Size:	53 kDa
Gene Name:	serum/glucocorticoid regulated kinase family member 3
Database Link:	NP_733827 Entrez Gene 23678 Human Q96BR1
Background:	The specific function of the protein remains unknown. This gene is a member of the Ser/Thr protein kinase family and encodes a phosphoprotein with a PX (phox homology) domain. The protein phosphorylates several target proteins and has a role in neutral amino acid transport and activation of potassium and chloride channels. Alternate transcriptional splice variants, encoding different isoforms, have been characterized.
Synonyms:	CISK; SGK2; SGKL

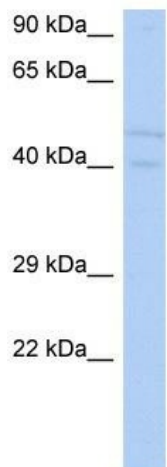


[View online »](#)

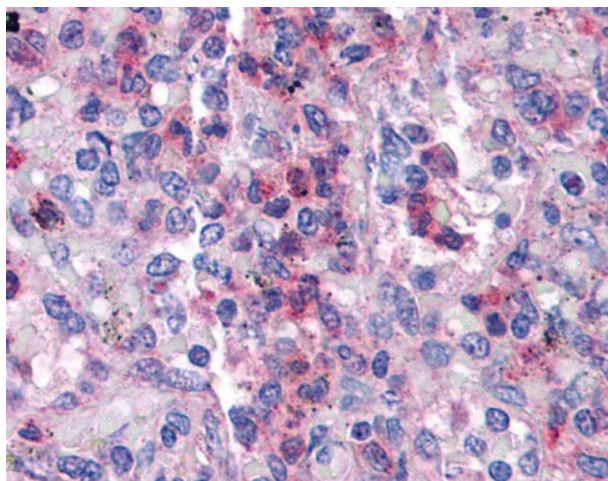
Note: Dog: 100%; Pig: 100%; Horse: 100%; Human: 100%; Bovine: 100%; Rabbit: 100%; Guinea pig: 100%; Rat: 93%; Mouse: 93%

Protein Families: Druggable Genome, Protein Kinase

Product images:



WB Suggested Anti-SGK3 Antibody Titration: 0.2-1 ug/ml; ELISA Titer: 1:1562500; Positive Control: SH-SY5Y cell lysate



Human Spleen