

Product datasheet for **TA330947**

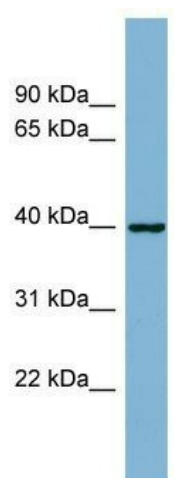
ELMOD2 Rabbit Polyclonal Antibody

Product data:

Product Type:	Primary Antibodies
Applications:	WB
Recommended Dilution:	WB
Reactivity:	Human
Host:	Rabbit
Isotype:	IgG
Clonality:	Polyclonal
Immunogen:	The immunogen for anti-ELMOD2 antibody: synthetic peptide directed towards the N terminal of human ELMOD2. Synthetic peptide located within the following region: FDTYVGAQRTHRIENSLTYSKNKVLQKATHVVQSEVDKYVDDIMKEKNIN
Formulation:	Liquid. Purified antibody supplied in 1x PBS buffer with 0.09% (w/v) sodium azide and 2% sucrose.
Purification:	Affinity Purified
Conjugation:	Unconjugated
Storage:	Store at -20°C as received.
Stability:	Stable for 12 months from date of receipt.
Predicted Protein Size:	35 kDa
Gene Name:	ELMO domain containing 2
Database Link:	NP_714913 Entrez Gene 255520 Human Q8IZ81
Background:	The function of this protein remains unknown.
Synonyms:	9830169G11Rik
Note:	Pig: 100%; Horse: 100%; Human: 100%; Mouse: 100%; Bovine: 100%; Rabbit: 100%; Dog: 93%; Rat: 93%; Guinea pig: 92%



[View online »](#)

Product images:

WB Suggested Anti-ELMOD2 Antibody Titration:
0.2-1 ug/ml; Positive Control: PANC1 cell lysate