

Product datasheet for **TA330946**

MED19 Rabbit Polyclonal Antibody

Product data:

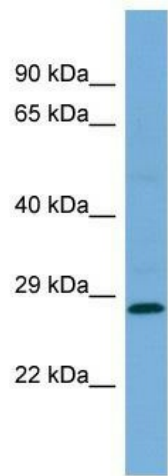
Product Type:	Primary Antibodies
Applications:	WB
Recommended Dilution:	WB
Reactivity:	Human
Host:	Rabbit
Isotype:	IgG
Clonality:	Polyclonal
Immunogen:	The immunogen for Anti-MED19 antibody is: synthetic peptide directed towards the middle region of Human MED19. Synthetic peptide located within the following region: LPGSHDNSSLRLIEKPPILSSSFNPITGTMLAGFRLHTGPLPEQCRLMH
Formulation:	Liquid. Purified antibody supplied in 1x PBS buffer with 0.09% (w/v) sodium azide and 2% sucrose. <i>Note that this product is shipped as lyophilized powder to China customers.</i>
Purification:	Affinity Purified
Conjugation:	Unconjugated
Storage:	Store at -20°C as received.
Stability:	Stable for 12 months from date of receipt.
Predicted Protein Size:	26 kDa
Gene Name:	mediator complex subunit 19
Database Link:	NP_703151 Entrez Gene 219541 Human A0JLT2
Background:	MED19 is a component of the Mediator complex, which is a coactivator for DNA-binding factors that activate transcription via RNA polymerase II .
Synonyms:	DT2P1G7; LCMR1; MED19AS
Note:	Dog: 100%; Pig: 100%; Rat: 100%; Horse: 100%; Human: 100%; Mouse: 100%; Bovine: 100%; Rabbit: 100%; Guinea pig: 100%; Zebrafish: 92%



[View online »](#)

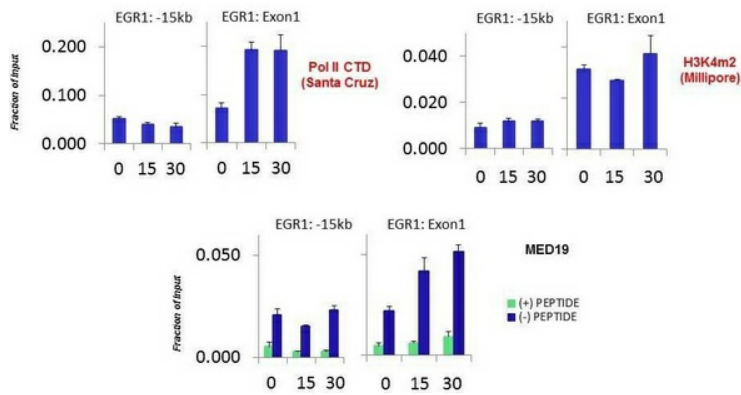
Protein Families: Druggable Genome

Product images:



Host: Rabbit; Target Name: MED19; Sample Tissue: Jurkat Whole cell lysates; Antibody Dilution: 1.0ug/ml

**HCT116 serum response
MED19
Matrix-ChIP**



Quiescent human colon carcinoma HCT116 cultures were treated with 10% FBS for three time points (0, 15, 30min) or (0, 30, 60min) were used in Matrix-ChIP and real-time PCR assays at EGR1 gene (Exon1) and 15kb upstream site.