

Product datasheet for **TA330943**

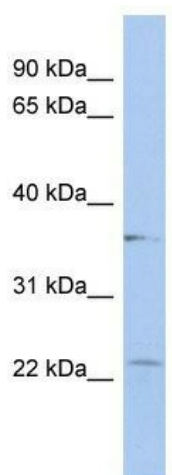
LYSMD2 Rabbit Polyclonal Antibody

Product data:

Product Type:	Primary Antibodies
Applications:	WB
Recommended Dilution:	WB
Reactivity:	Human
Host:	Rabbit
Isotype:	IgG
Clonality:	Polyclonal
Immunogen:	The immunogen for anti-LYSMD2 antibody: synthetic peptide directed towards the middle region of human LYSMD2. Synthetic peptide located within the following region: VEHRVRAGDTLQGIALKYGVTMEQIKRANKLFTNDCIFLKKTLNIPVISE
Formulation:	Liquid. Purified antibody supplied in 1x PBS buffer with 0.09% (w/v) sodium azide and 2% sucrose.
Purification:	Affinity Purified
Conjugation:	Unconjugated
Storage:	Store at -20°C as received.
Stability:	Stable for 12 months from date of receipt.
Predicted Protein Size:	23 kDa
Gene Name:	LysM domain containing 2
Database Link:	NP_699205 Entrez Gene 256586 Human Q8IV50
Background:	The specific function of the protein remains unknown.
Synonyms:	DKFZp686I2243; MGC35274
Note:	Pig: 100%; Human: 100%; Mouse: 100%; Bovine: 100%; Rabbit: 100%; Zebrafish: 79%; Guinea pig: 79%



[View online »](#)

Product images:

WB Suggested Anti-LYSMD2 Antibody Titration:
0.2-1 ug/ml; ELISA Titer: 1:312500; Positive
Control: HepG2 cell lysate