

## Product datasheet for **TA330942**

### Peptidase inhibitor 16 (PI16) Rabbit Polyclonal Antibody

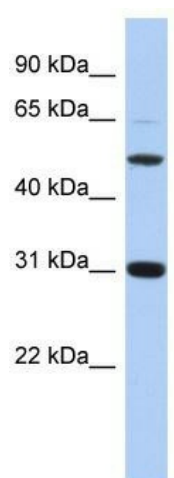
#### Product data:

Product Type:	Primary Antibodies
Applications:	WB
Recommended Dilution:	WB
Reactivity:	Human
Host:	Rabbit
Isotype:	IgG
Clonality:	Polyclonal
Immunogen:	The immunogen for anti-PI16 antibody: synthetic peptide directed towards the middle region of human PI16. Synthetic peptide located within the following region: SKSLPNFPNTSATANATGGRALALQSSLPGAEGPDKPSVVSGLNSGPGHV
Formulation:	Liquid. Purified antibody supplied in 1x PBS buffer with 0.09% (w/v) sodium azide and 2% sucrose. <i>Note that this product is shipped as lyophilized powder to China customers.</i>
Purification:	Affinity Purified
Conjugation:	Unconjugated
Storage:	Store at -20°C as received.
Stability:	Stable for 12 months from date of receipt.
Predicted Protein Size:	47 kDa
Gene Name:	peptidase inhibitor 16
Database Link:	<a href="#">NP_699201</a> <a href="#">Entrez Gene 221476 Human</a> <a href="#">Q6UXB8</a>
Background:	PI16 is a putative serine protease inhibitor. PI16 may serve as a marker following prostatectomy for prostate cancer.
Synonyms:	CD364; CRISP9; MSMBBP; PSPBP
Note:	Human: 100%; Dog: 93%; Horse: 92%; Pig: 77%
Protein Families:	Transmembrane



[View online »](#)

## Product images:



WB Suggested Anti-PI16 Antibody Titration: 0.2-1 ug/ml; ELISA Titer: 1:1562500; Positive Control: 721\_B cell lysate