

Product datasheet for **TA330941**

ZCCHC24 Rabbit Polyclonal Antibody

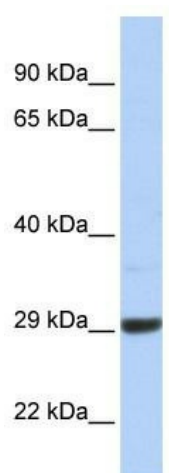
Product data:

Product Type:	Primary Antibodies
Applications:	WB
Recommended Dilution:	WB
Reactivity:	Human
Host:	Rabbit
Isotype:	IgG
Clonality:	Polyclonal
Immunogen:	The immunogen for anti-C10orf56 antibody: synthetic peptide directed towards the middle region of human C10orf56. Synthetic peptide located within the following region: LTEHFSDLTLTSEARKPSKRPPPNYLCHLCFNKGHYIKDCPQARPKGEGL
Formulation:	Liquid. Purified antibody supplied in 1x PBS buffer with 0.09% (w/v) sodium azide and 2% sucrose. <i>Note that this product is shipped as lyophilized powder to China customers.</i>
Purification:	Affinity Purified
Conjugation:	Unconjugated
Storage:	Store at -20°C as received.
Stability:	Stable for 12 months from date of receipt.
Predicted Protein Size:	27 kDa
Gene Name:	zinc finger CCHC-type containing 24
Database Link:	NP_699198 Entrez Gene 219654 Human Q8N2G6
Background:	The exact function of C10orf56 remains unknown.
Synonyms:	C10orf56; Z3CXXC8
Note:	Pig: 100%; Rat: 100%; Human: 100%; Mouse: 100%; Rabbit: 100%; Guinea pig: 100%; Dog: 93%; Horse: 93%; Bovine: 92%; Zebrafish: 92%



[View online »](#)

Product images:



WB Suggested Anti-C10orf56 Antibody Titration:
0.2-1 ug/ml; ELISA Titer: 1:1562500; Positive
Control: Jurkat cell lysate