

Product datasheet for **TA330940**

FBXW8 Rabbit Polyclonal Antibody

Product data:

Product Type:	Primary Antibodies
Applications:	WB
Recommended Dilution:	WB
Reactivity:	Human
Host:	Rabbit
Isotype:	IgG
Clonality:	Polyclonal
Immunogen:	The immunogen for anti-FBXW8 antibody: synthetic peptide directed towards the middle region of human FBXW8. Synthetic peptide located within the following region: RNADLDSFTTHRRHRGLIRAYEFAVDQLAFQSPLPVCRSSCDAMATHYYD
Formulation:	Liquid. Purified antibody supplied in 1x PBS buffer with 0.09% (w/v) sodium azide and 2% sucrose. <i>Note that this product is shipped as lyophilized powder to China customers.</i>
Purification:	Affinity Purified
Conjugation:	Unconjugated
Storage:	Store at -20°C as received.
Stability:	Stable for 12 months from date of receipt.
Predicted Protein Size:	67 kDa
Gene Name:	F-box and WD repeat domain containing 8
Database Link:	NP_699179 Entrez Gene 26259 Human Q8N3Y1



[View online »](#)

Background:

FBXW8 is a member of the F-box protein family, members of which are characterized by an approximately 40 amino acid motif, the F-box. The F-box proteins constitute one of the four subunits of ubiquitin protein ligase complex called SCFs (SKP1-cullin-F-box), which function in phosphorylation-dependent ubiquitination. The F-box proteins are divided into three classes: Fbws containing WD-40 domains, Fbls containing leucine-rich repeats, and Fbxs containing either different protein-protein interaction modules or no recognizable motifs. FBXW8 contains a WD-40 domain, in addition to an F-box motif, so it belongs to the Fbw class.

Synonyms:

FBW6; FBW8; FBX29; FBXO29; FBXW6

Note:

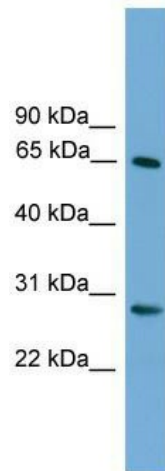
Human: 100%; Pig: 93%; Rat: 93%; Mouse: 93%; Guinea pig: 93%; Dog: 92%; Horse: 86%; Bovine: 86%; Rabbit: 86%

Protein Families:

Druggable Genome

Protein Pathways:

Ubiquitin mediated proteolysis

Product images:

WB Suggested Anti-FBXW8 Antibody Titration:
0.2-1 ug/ml; Positive Control: ACHN cell lysate