

Product datasheet for **TA330938**

EML3 Rabbit Polyclonal Antibody

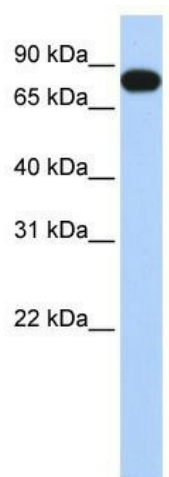
Product data:

Product Type:	Primary Antibodies
Applications:	WB
Recommended Dilution:	WB
Reactivity:	Human
Host:	Rabbit
Isotype:	IgG
Clonality:	Polyclonal
Immunogen:	The immunogen for anti-EML3 antibody: synthetic peptide directed towards the N terminal of human EML3. Synthetic peptide located within the following region: LLVRSGSTESRGGKDPLSSPGGPGSRRSNYNLEGISVKMFLRGRPITMYI
Formulation:	Liquid. Purified antibody supplied in 1x PBS buffer with 0.09% (w/v) sodium azide and 2% sucrose.
Purification:	Affinity Purified
Conjugation:	Unconjugated
Storage:	Store at -20°C as received.
Stability:	Stable for 12 months from date of receipt.
Predicted Protein Size:	95 kDa
Gene Name:	echinoderm microtubule associated protein like 3
Database Link:	NP_694997 Entrez Gene 256364 Human Q32P44
Background:	EML3 may modify the assembly dynamics of microtubules, such that microtubules are slightly longer, but more dynamic.
Synonyms:	ELP95
Note:	Dog: 100%; Pig: 100%; Rat: 100%; Horse: 100%; Human: 100%; Mouse: 100%; Bovine: 100%; Rabbit: 100%; Guinea pig: 100%



[View online »](#)

Product images:



WB Suggested Anti-EML3 Antibody Titration: 0.2-1 ug/ml; ELISA Titer: 1:312500; Positive Control: Human Placenta