

Product datasheet for **TA330937**

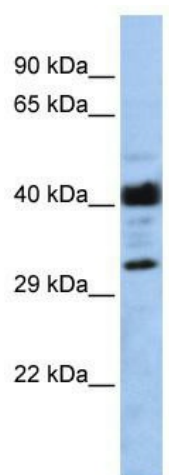
LRRC57 Rabbit Polyclonal Antibody

Product data:

Product Type:	Primary Antibodies
Applications:	WB
Recommended Dilution:	WB
Reactivity:	Human
Host:	Rabbit
Isotype:	IgG
Clonality:	Polyclonal
Immunogen:	The immunogen for anti-LRRC57 antibody: synthetic peptide directed towards the middle region of human LRRC57. Synthetic peptide located within the following region: NNKLTVLPDEICNLKKLETLSLNNHLRELPSTFGQLSALKTLSLSGNQL
Formulation:	Liquid. Purified antibody supplied in 1x PBS buffer with 0.09% (w/v) sodium azide and 2% sucrose. <i>Note that this product is shipped as lyophilized powder to China customers.</i>
Purification:	Affinity Purified
Conjugation:	Unconjugated
Storage:	Store at -20°C as received.
Stability:	Stable for 12 months from date of receipt.
Predicted Protein Size:	27 kDa
Gene Name:	leucine rich repeat containing 57
Database Link:	NP_694992 Entrez Gene 255252 Human Q8N9N7
Background:	The exact function of LRRC57 remains unknown.
Synonyms:	DKFZp686H1865; FLJ36812
Note:	Dog: 100%; Pig: 100%; Rat: 100%; Horse: 100%; Human: 100%; Mouse: 100%; Bovine: 93%; Rabbit: 93%; Guinea pig: 86%
Protein Families:	Druggable Genome



[View online »](#)

Product images:

WB Suggested Anti-LRRC57 Antibody Titration:
0.2-1 ug/ml; ELISA Titer: 1:312500; Positive
Control: MCF7 cell lysate