

Product datasheet for **TA330935**

PROSER2 Rabbit Polyclonal Antibody

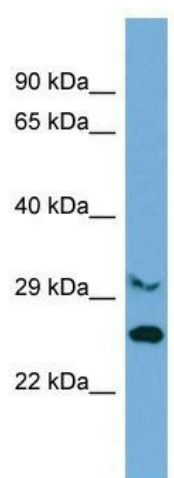
Product data:

Product Type:	Primary Antibodies
Applications:	WB
Recommended Dilution:	WB
Reactivity:	Human
Host:	Rabbit
Isotype:	IgG
Clonality:	Polyclonal
Immunogen:	The immunogen for Anti-C10orf47 antibody is: synthetic peptide directed towards the C-terminal region of Human C10orf47. Synthetic peptide located within the following region: LCFRPGPALPSTRARQSFPGPRQPNGAQDWRRADSLRPQGITVQFAGRG
Formulation:	Liquid. Purified antibody supplied in 1x PBS buffer with 0.09% (w/v) sodium azide and 2% sucrose.
Purification:	Affinity Purified
Conjugation:	Unconjugated
Storage:	Store at -20°C as received.
Stability:	Stable for 12 months from date of receipt.
Predicted Protein Size:	26 kDa
Gene Name:	proline and serine rich 2
Database Link:	NP_694988 Entrez Gene 254427 Human Q86WR7
Background:	The function of this protein remains unknown.
Synonyms:	C10orf47
Note:	Human: 100%



[View online »](#)

Product images:



Host: Rabbit; Target Name: C10orf47; Sample
Tissue: Jurkat Whole Cell lysates; Antibody
Dilution: 1.0ug/ml