

## Product datasheet for **TA330934**

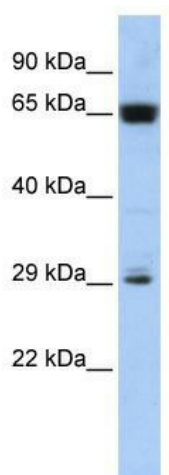
### **C6orf223 Rabbit Polyclonal Antibody**

#### **Product data:**

|                         |                                                                                                                                                                                                                                |
|-------------------------|--------------------------------------------------------------------------------------------------------------------------------------------------------------------------------------------------------------------------------|
| Product Type:           | Primary Antibodies                                                                                                                                                                                                             |
| Applications:           | WB                                                                                                                                                                                                                             |
| Recommended Dilution:   | WB                                                                                                                                                                                                                             |
| Reactivity:             | Human                                                                                                                                                                                                                          |
| Host:                   | Rabbit                                                                                                                                                                                                                         |
| Isotype:                | IgG                                                                                                                                                                                                                            |
| Clonality:              | Polyclonal                                                                                                                                                                                                                     |
| Immunogen:              | The immunogen for anti-MGC45491 antibody: synthetic peptide directed towards the middle region of human MGC45491. Synthetic peptide located within the following region:<br>CRPLRPLLGFRESDSAKPASLRLQLHTPSARRNYRIAGARLMRSNYPPPL |
| Formulation:            | Liquid. Purified antibody supplied in 1x PBS buffer with 0.09% (w/v) sodium azide and 2% sucrose.<br><i>Note that this product is shipped as lyophilized powder to China customers.</i>                                        |
| Purification:           | Affinity Purified                                                                                                                                                                                                              |
| Conjugation:            | Unconjugated                                                                                                                                                                                                                   |
| Storage:                | Store at -20°C as received.                                                                                                                                                                                                    |
| Stability:              | Stable for 12 months from date of receipt.                                                                                                                                                                                     |
| Predicted Protein Size: | 26 kDa                                                                                                                                                                                                                         |
| Gene Name:              | chromosome 6 open reading frame 223                                                                                                                                                                                            |
| Database Link:          | <a href="#">NP_001165463</a><br><a href="#">Entrez Gene 221416 Human</a>                                                                                                                                                       |
| Background:             | The exact function of MGC45491 remains unknown.                                                                                                                                                                                |
| Synonyms:               | MGC45491                                                                                                                                                                                                                       |
| Note:                   | Human: 100%                                                                                                                                                                                                                    |



[View online »](#)

**Product images:**

WB Suggested Anti-MGC45491 Antibody Titration:  
0.2-1 ug/ml; ELISA Titer: 1:62500; Positive Control:  
Jurkat cell lysate