

Product datasheet for **TA330933**

ANKRD15 (KANK1) Rabbit Polyclonal Antibody

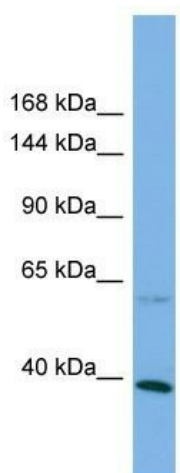
Product data:

Product Type:	Primary Antibodies
Applications:	WB
Recommended Dilution:	WB
Reactivity:	Human
Host:	Rabbit
Isotype:	IgG
Clonality:	Polyclonal
Immunogen:	The immunogen for Anti-KANK1 antibody is: synthetic peptide directed towards the C-terminal region of Human KANK1. Synthetic peptide located within the following region: STALSIALEAGHKDIAVLLYAHVNFKAQSPGTPRLGRKTSPGPTHRGSF
Formulation:	Liquid. Purified antibody supplied in 1x PBS buffer with 0.09% (w/v) sodium azide and 2% sucrose.
Purification:	Affinity Purified
Conjugation:	Unconjugated
Storage:	Store at -20°C as received.
Stability:	Stable for 12 months from date of receipt.
Predicted Protein Size:	36 kDa
Gene Name:	KN motif and ankyrin repeat domains 1
Database Link:	NP_694856 Entrez Gene 23189 Human Q14678
Background:	The function of this protein remains unknown.
Synonyms:	ANKRD15; CPSQ2; KANK
Note:	Pig: 100%; Rat: 100%; Horse: 100%; Human: 100%; Mouse: 100%; Bovine: 100%; Rabbit: 93%; Dog: 86%; Guinea pig: 86%



[View online »](#)

Product images:



Host: Rabbit

Target Name: KANK1

Sample Tissue: HCT15 Cell Lysate

Antibody Dilution: 1.0µg/ml

Host: Rabbit; Target Name: KANK1; Sample Tissue: HCT15 Whole Cell lysates; Antibody Dilution: 1.0ug/ml