

Product datasheet for **TA330932**

FYN Rabbit Polyclonal Antibody

Product data:

Product Type:	Primary Antibodies
Applications:	WB
Recommended Dilution:	WB
Reactivity:	Human, Mouse
Host:	Rabbit
Isotype:	IgG
Clonality:	Polyclonal
Immunogen:	The immunogen for anti-FYN antibody: synthetic peptide directed towards the middle region of human FYN. Synthetic peptide located within the following region: CPQDCPISLHELMIHWCWKDPEERPTFEYLQSFLEDYFTATEPQYQPGEN
Formulation:	Liquid. Purified antibody supplied in 1x PBS buffer with 0.09% (w/v) sodium azide and 2% sucrose. <i>Note that this product is shipped as lyophilized powder to China customers.</i>
Purification:	Affinity Purified
Conjugation:	Unconjugated
Storage:	Store at -20°C as received.
Stability:	Stable for 12 months from date of receipt.
Predicted Protein Size:	59 kDa
Gene Name:	FYN proto-oncogene, Src family tyrosine kinase
Database Link:	NP_002028 Entrez Gene 14360 Mouse Entrez Gene 2534 Human P06241
Background:	FYN is a membrane-associated tyrosine kinase that has been implicated in the control of cell growth. The protein associates with the p85 subunit of phosphatidylinositol 3-kinase and interacts with the fyn-binding protein.
Synonyms:	p59-FYN; SLK; SYN
Note:	Dog: 100%; Pig: 100%; Rat: 100%; Human: 100%; Mouse: 100%; Bovine: 100%; Rabbit: 100%; Guinea pig: 100%; Zebrafish: 93%; Horse: 92%

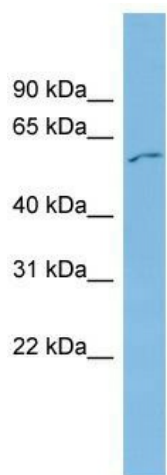


[View online »](#)

Protein Families: Druggable Genome, Protein Kinase

Protein Pathways: Adherens junction, Axon guidance, Fc epsilon RI signaling pathway, Focal adhesion, Natural killer cell mediated cytotoxicity, Pathogenic Escherichia coli infection, Prion diseases, T cell receptor signaling pathway, Viral myocarditis

Product images:



WB Suggested Anti-FYN Antibody Titration: 0.2-1 ug/ml; ELISA Titer: 1:312500; Positive Control: COLO205 cell lysate