

## Product datasheet for **TA330931**

### **FYN Rabbit Polyclonal Antibody**

#### **Product data:**

|                                |   |
|--------------------------------|---|
| <b>Product Type:</b>           | Primary Antibodies  |
| <b>Applications:</b>           | WB  |
| <b>Recommended Dilution:</b>   | WB  |
| <b>Reactivity:</b>             | Human   |
| <b>Host:</b>                   | Rabbit  |
| <b>Isotype:</b>                | IgG   |
| <b>Clonality:</b>              | Polyclonal  |
| <b>Immunogen:</b>              | The immunogen for anti-FYN antibody: synthetic peptide directed towards the N terminal of human FYN. Synthetic peptide located within the following region:<br>GCVQCKDKEATKLTEERDGLNQSSGYRYGTDPTPQHYPSEFGVTSIPNYY |
| <b>Formulation:</b>            | Liquid. Purified antibody supplied in 1x PBS buffer with 0.09% (w/v) sodium azide and 2% sucrose.<br><i>Note that this product is shipped as lyophilized powder to China customers.</i>                           |
| <b>Purification:</b>           | Affinity Purified   |
| <b>Conjugation:</b>            | Unconjugated  |
| <b>Storage:</b>                | Store at -20°C as received.   |
| <b>Stability:</b>              | Stable for 12 months from date of receipt.  |
| <b>Predicted Protein Size:</b> | 54 kDa  |
| <b>Gene Name:</b>              | FYN proto-oncogene, Src family tyrosine kinase  |
| <b>Database Link:</b>          | <a href="#">NP_694593</a><br><a href="#">Entrez Gene 2534 Human</a><br><a href="#">P06241</a>   |

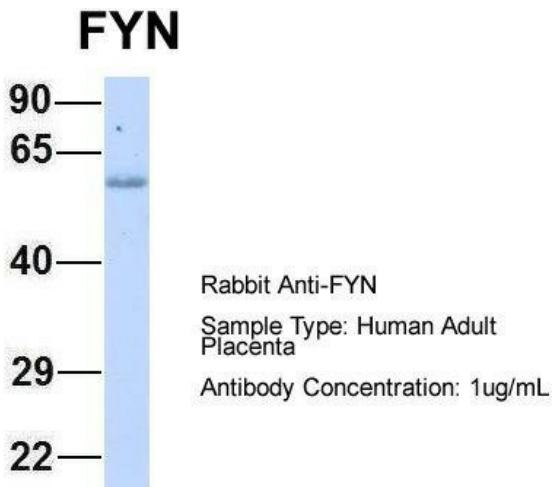


[View online »](#)

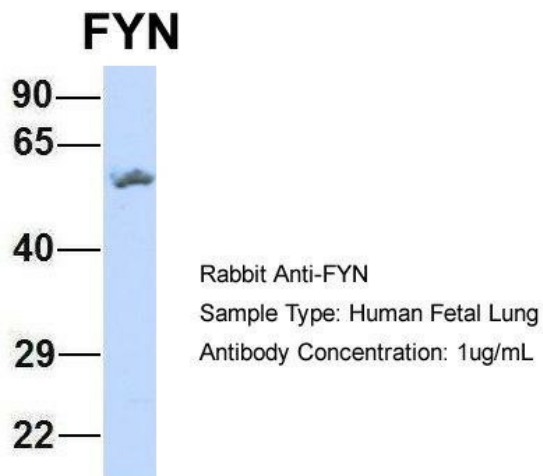
|                          |   |
|--------------------------|---|
| <b>Background:</b>       | FYN is a membrane-associated tyrosine kinase that has been implicated in the control of cell growth. The protein associates with the p85 subunit of phosphatidylinositol 3-kinase and interacts with the fyn-binding protein. This gene is a member of the protein-tyrosine kinase oncogene family. It encodes a membrane-associated tyrosine kinase that has been implicated in the control of cell growth. The protein associates with the p85 subunit of phosphatidylinositol 3-kinase and interacts with the fyn-binding protein. Alternatively spliced transcript variants encoding distinct isoforms exist. |
| <b>Synonyms:</b>         | p59-FYN; SLK; SYN   |
| <b>Note:</b>             | Dog: 100%; Pig: 100%; Rat: 100%; Horse: 100%; Human: 100%; Mouse: 100%; Bovine: 100%; Rabbit: 100%; Guinea pig: 100%  |
| <b>Protein Families:</b> | Druggable Genome, Protein Kinase  |
| <b>Protein Pathways:</b> | Adherens junction, Axon guidance, Fc epsilon RI signaling pathway, Focal adhesion, Natural killer cell mediated cytotoxicity, Pathogenic Escherichia coli infection, Prion diseases, T cell receptor signaling pathway, Viral myocarditis   |

**Product images:**

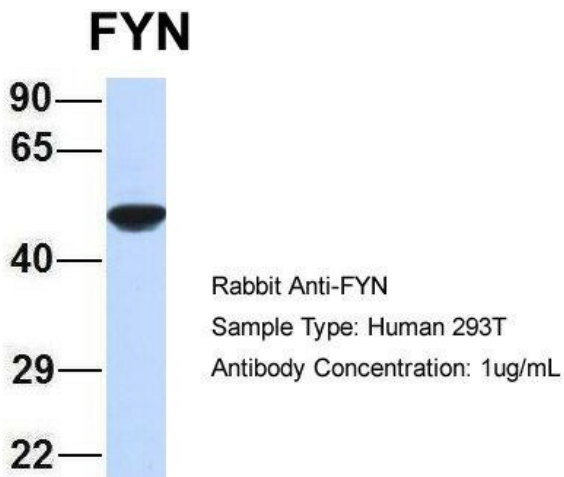
WB Suggested Anti-FYN Antibody Titration: 0.2-1 ug/ml; ELISA Titer: 1:12500; Positive Control: Human heart



Host: Rabbit; Target Name: FYN; Sample Tissue: Human Adult Placenta; Antibody Dilution: 1.0ug/ml



Host: Rabbit; Target Name: FYN; Sample Tissue: Human Fetal Lung; Antibody Dilution: 1.0ug/ml



Host: Rabbit; Target Name: FYN; Sample Tissue: 293T; Antibody Dilution: 1.0ug/ml