

## Product datasheet for **TA330929**

### Mitochondrial Translational Initiation Factor 3 (MTIF3) Rabbit Polyclonal Antibody

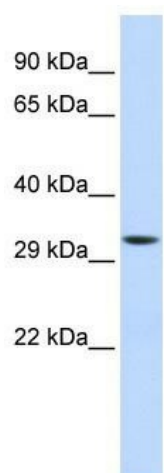
#### Product data:

Product Type:	Primary Antibodies
Applications:	WB
Recommended Dilution:	WB
Reactivity:	Human
Host:	Rabbit
Isotype:	IgG
Clonality:	Polyclonal
Immunogen:	The immunogen for anti-MTIF3 antibody: synthetic peptide directed towards the middle region of human MTIF3. Synthetic peptide located within the following region: AVQGGKALMCVLRALSKNEEKAYKETQETQERDTLNKDHGNDKESNVLHQ
Formulation:	Liquid. Purified antibody supplied in 1x PBS buffer with 0.09% (w/v) sodium azide and 2% sucrose. <i>Note that this product is shipped as lyophilized powder to China customers.</i>
Purification:	Affinity Purified
Conjugation:	Unconjugated
Storage:	Store at -20°C as received.
Stability:	Stable for 12 months from date of receipt.
Predicted Protein Size:	32 kDa
Gene Name:	mitochondrial translational initiation factor 3
Database Link:	<a href="#">NP_690876</a> <a href="#">Entrez Gene 219402 Human</a> <a href="#">Q9H2K0</a>
Background:	IF-3 binds to the 28S ribosomal subunit and shifts the equilibrium between 55S ribosomes and their 39S and 28S subunits in favor of the free subunits, thus enhancing the availability of 28S subunits on which protein synthesis initiation begins.
Synonyms:	IF3mt
Note:	Human: 100%



[View online »](#)

## Product images:



WB Suggested Anti-MTIF3 Antibody Titration: 0.2-1 ug/ml; ELISA Titer: 1:62500; Positive Control: 293T cell lysate