

Product datasheet for TA330928

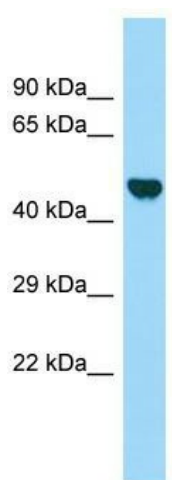
Lrwd1 Rabbit Polyclonal Antibody

Product data:

Product Type:	Primary Antibodies
Applications:	WB
Recommended Dilution:	WB
Reactivity:	Rat
Host:	Rabbit
Isotype:	IgG
Clonality:	Polyclonal
Immunogen:	The immunogen for Anti-LOC304396 antibody is: synthetic peptide directed towards the middle region of RAT LOC304396. Synthetic peptide located within the following region: EPLHFLQCHSRNNSPKDLETQLWACAFEPAREEGHSGATSQTVATCGGEA
Formulation:	Liquid. Purified antibody supplied in 1x PBS buffer with 0.09% (w/v) sodium azide and 2% sucrose.
Purification:	Affinity Purified
Conjugation:	Unconjugated
Storage:	Store at -20°C as received.
Stability:	Stable for 12 months from date of receipt.
Predicted Protein Size:	45 kDa
Gene Name:	leucine-rich repeats and WD repeat domain containing 1
Database Link:	NP_001014003 Entrez Gene 304396 Rat
Background:	The function of this protein remains unknown.
Synonyms:	DKFZp434K1815
Note:	Human: 100%; Yeast: 100%; Dog: 92%; Pig: 92%; Horse: 92%; Rabbit: 92%; Rat: 85%; Mouse: 85%; Bovine: 85%; Guinea pig: 85%


[View online »](#)

Product images:



Host: Rabbit; Target Name: LOC304396; Sample
Tissue: Rat Kidney lysates; Antibody Dilution:
1.0ug/ml