

## Product datasheet for TA330927

### C9orf43 Rabbit Polyclonal Antibody

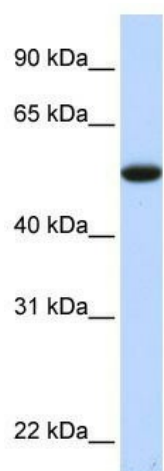
#### Product data:

Product Type:	Primary Antibodies
Applications:	WB
Recommended Dilution:	WB
Reactivity:	Human
Host:	Rabbit
Isotype:	IgG
Clonality:	Polyclonal
Immunogen:	The immunogen for anti-C9orf43 antibody: synthetic peptide directed towards the middle region of human C9orf43. Synthetic peptide located within the following region: PEAQAARQKKISFNSEIMASTGWNSELKLLRILQDTDEDEEDQSSGAE
Formulation:	Liquid. Purified antibody supplied in 1x PBS buffer with 0.09% (w/v) sodium azide and 2% sucrose. <i>Note that this product is shipped as lyophilized powder to China customers.</i>
Purification:	Affinity Purified
Conjugation:	Unconjugated
Storage:	Store at -20°C as received.
Stability:	Stable for 12 months from date of receipt.
Predicted Protein Size:	52 kDa
Gene Name:	chromosome 9 open reading frame 43
Database Link:	<a href="#">NP_689999</a> <a href="#">Entrez Gene 257169 Human</a> <a href="#">Q8TAL5</a>
Background:	The function of the C9orf43 protein remains unknown.
Synonyms:	MGC17358
Note:	Human: 100%; Dog: 92%; Yeast: 90%; Pig: 75%



[View online »](#)

## Product images:



WB Suggested Anti-C9orf43 Antibody Titration:  
0.2-1 ug/ml; ELISA Titer: 1:62500; Positive Control:  
Human Liver