

Product datasheet for **TA330925**

TMEM146 (CATSPERD) Rabbit Polyclonal Antibody

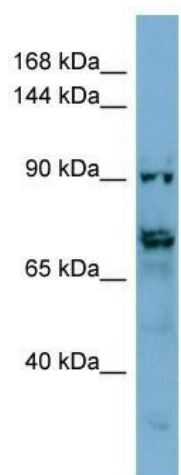
Product data:

Product Type:	Primary Antibodies
Applications:	WB
Recommended Dilution:	WB
Reactivity:	Human
Host:	Rabbit
Isotype:	IgG
Clonality:	Polyclonal
Immunogen:	The immunogen for anti-TMEM146 antibody: synthetic peptide directed towards the middle region of human TMEM146. Synthetic peptide located within the following region: NPHSLGFQATFYENGYTSDGNTKYKLDIFLKQQQHWGRTDSNFTSSLKKA
Formulation:	Liquid. Purified antibody supplied in 1x PBS buffer with 0.09% (w/v) sodium azide and 2% sucrose.
Purification:	Affinity Purified
Conjugation:	Unconjugated
Storage:	Store at -20°C as received.
Stability:	Stable for 12 months from date of receipt.
Predicted Protein Size:	90 kDa
Gene Name:	cation channel sperm associated auxiliary subunit delta
Database Link:	NP_689997 Entrez Gene 257062 Human Q86XM0
Background:	TMEM146 is a single-pass type I membrane protein. The functions of TMEM146 remain unknown.
Synonyms:	TMEM146
Note:	Human: 100%; Pig: 83%; Horse: 83%
Protein Families:	Transmembrane



[View online »](#)

Product images:



WB Suggested Anti-TMEM146 Antibody Titration:
0.2-1 ug/ml; ELISA Titer: 1:312500; Positive
Control: HepG2 cell lysate