

## Product datasheet for **TA330921**

### Ribonuclease Inhibitor (RNH1) Rabbit Polyclonal Antibody

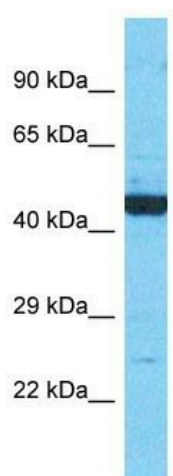
#### Product data:

Product Type:	Primary Antibodies
Applications:	WB
Recommended Dilution:	WB
Reactivity:	Human
Host:	Rabbit
Isotype:	IgG
Clonality:	Polyclonal
Immunogen:	The immunogen for Anti-RNH1 antibody is: synthetic peptide directed towards the N-terminal region of Human RNH1. Synthetic peptide located within the following region: YCSLSAASCEPLASVLRKPDFKELTVSNNDINEAGVRVLCQGLKDSPCQ
Formulation:	Liquid. Purified antibody supplied in 1x PBS buffer with 0.09% (w/v) sodium azide and 2% sucrose. <i>Note that this product is shipped as lyophilized powder to China customers.</i>
Conjugation:	Unconjugated
Storage:	Store at -20°C as received.
Stability:	Stable for 12 months from date of receipt.
Predicted Protein Size:	50 kDa
Gene Name:	ribonuclease/angiogenin inhibitor 1
Database Link:	<a href="#">NP_002930</a> <a href="#">Entrez Gene 6050 Human P13489</a>
Background:	RNH1 is the inhibitor of pancreatic RNase and angiogenin. RNH1 may also function in the modulation of cellular activities.
Synonyms:	RAI; RNH
Note:	Rat: 100%; Human: 100%; Horse: 93%; Mouse: 77%



[View online »](#)

## Product images:



Host: Rabbit  
Target Name: RNH1  
Sample Tissue: MCF7 Cell Lysate  
Antibody Dilution: 1.0µg/ml

Host: Rabbit; Target Name: RNH1; Sample Tissue:  
MCF7 Whole Cell lysates; Antibody Dilution:  
1.0ug/ml