

## Product datasheet for TA330920

### NEU2 Rabbit Polyclonal Antibody

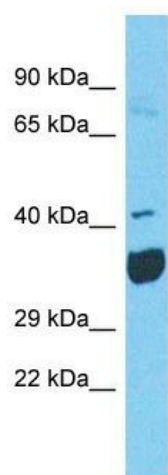
#### Product data:

Product Type:	Primary Antibodies
Applications:	WB
Recommended Dilution:	WB
Reactivity:	Human
Host:	Rabbit
Isotype:	IgG
Clonality:	Polyclonal
Immunogen:	The immunogen for Anti-NEU2 antibody is: synthetic peptide directed towards the N-terminal region of Human NEU2. Synthetic peptide located within the following region: ANVTRLCQVTSTDHGRTWSSPRDLTDA AIGPAYREWSTFAVGPGHCLQLH
Formulation:	Liquid. Purified antibody supplied in 1x PBS buffer with 0.09% (w/v) sodium azide and 2% sucrose. <i>Note that this product is shipped as lyophilized powder to China customers.</i>
Conjugation:	Unconjugated
Storage:	Store at -20°C as received.
Stability:	Stable for 12 months from date of receipt.
Predicted Protein Size:	41 kDa
Gene Name:	neuraminidase 2 (cytosolic sialidase)
Database Link:	<a href="#">NP_005374</a> <a href="#">Entrez Gene 4759 Human</a> <a href="#">Q9Y3R4</a>
Background:	This gene belongs to a family of glycohydrolytic enzymes which remove sialic acid residues from glycoproteins and glycolipids. Expression studies in COS7 cells confirmed that this gene encodes a functional sialidase. Its cytosolic localization was demonstrated by cell fractionation experiments.
Synonyms:	SIAL2
Note:	Human: 100%; Pig: 79%; Dog: 77%
Protein Pathways:	Other glycan degradation, Sphingolipid metabolism



[View online »](#)

## Product images:



Host: Rabbit  
Target Name: NEU2  
Sample Tissue: 293T Cell Lysate  
Antibody Dilution: 1.0 $\mu$ g/ml

Host: Rabbit; Target Name: NEU2; Sample Tissue:  
293T Whole Cell lysates; Antibody Dilution:  
1.0ug/ml