

Product datasheet for **TA330919**

ASMT Rabbit Polyclonal Antibody

Product data:

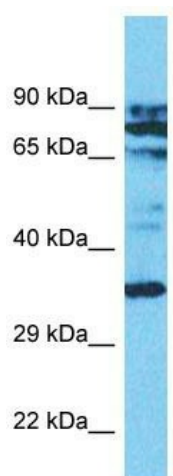
| | |
|-------------------------|--|
| Product Type: | Primary Antibodies |
| Applications: | WB |
| Recommended Dilution: | WB |
| Reactivity: | Human |
| Host: | Rabbit |
| Isotype: | IgG |
| Clonality: | Polyclonal |
| Immunogen: | The immunogen for Anti-ASMT antibody is: synthetic peptide directed towards the N-terminal region of Human ASMT. Synthetic peptide located within the following region: VRSAHGTELLLDICVSLKLLKVETRGGKAFYRNTLSSDYLTTSPTSQ |
| Formulation: | Liquid. Purified antibody supplied in 1x PBS buffer with 0.09% (w/v) sodium azide and 2% sucrose. <i>Note that this product is shipped as lyophilized powder to China customers.</i> |
| Conjugation: | Unconjugated |
| Storage: | Store at -20°C as received. |
| Stability: | Stable for 12 months from date of receipt. |
| Predicted Protein Size: | 37 kDa |
| Gene Name: | acetylserotonin O-methyltransferase |
| Database Link: | NP_004034 Entrez Gene 438 Human P46597 |
| Background: | This gene belongs to the methyltransferase superfamily, and is located in the pseudoautosomal region (PAR) at the end of the short arms of the X and Y chromosomes. The encoded enzyme catalyzes the final reaction in the synthesis of melatonin, and is abundant in the pineal gland. Alternatively spliced transcript variants have been noted for this gene. |
| Synonyms: | ASMTY; HIOMT; HIOMTY |
| Note: | Human: 100%; Horse: 92%; Dog: 83% |
| Protein Families: | Druggable Genome |



[View online »](#)

Protein Pathways: Metabolic pathways, Tryptophan metabolism

Product images:



Host: Rabbit

Target Name: ASMT

Sample Tissue: Jurkat Cell Lysate

Antibody Dilution: 1.0 μ g/ml

Host: Rabbit; Target Name: ASMT; Sample Tissue: Jurkat Whole Cell lysates; Antibody Dilution: 1.0 μ g/ml