

Product datasheet for **TA330915**

GCM2 Rabbit Polyclonal Antibody

Product data:

Product Type:	Primary Antibodies
Applications:	WB
Recommended Dilution:	WB
Reactivity:	Human
Host:	Rabbit
Isotype:	IgG
Clonality:	Polyclonal
Immunogen:	The immunogen for Anti-GCM2 antibody is: synthetic peptide directed towards the N-terminal region of Human GCM2. Synthetic peptide located within the following region: HSGYPVTNFWRLDGNNAIFFQAKGVHDHPRPESKSETEARRSAIKRQMASF
Formulation:	Liquid. Purified antibody supplied in 1x PBS buffer with 0.09% (w/v) sodium azide and 2% sucrose.
Conjugation:	Unconjugated
Storage:	Store at -20°C as received.
Stability:	Stable for 12 months from date of receipt.
Predicted Protein Size:	57 kDa
Gene Name:	glial cells missing homolog 2
Database Link:	NP_004743 Entrez Gene 9247 Human O75603



Background:

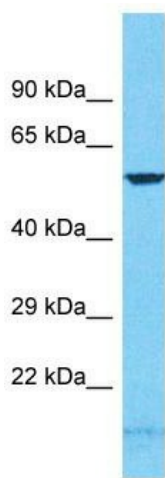
This gene is a homolog of the *Drosophila* glial cells missing gene, which is thought to act as a binary switch between neuronal and glial cell determination. The protein encoded by this gene contains a conserved N-terminal GCM motif that has DNA-binding activity. The protein is a transcription factor that acts as a master regulator of parathyroid development. It has been suggested that this transcription factor might mediate the effect of calcium on parathyroid hormone expression and secretion in parathyroid cells. Mutations in this gene are associated with hypoparathyroidism.

Synonyms:

GCMB; hGCMB

Note:

Dog: 100%; Pig: 100%; Rat: 100%; Horse: 100%; Human: 100%; Bovine: 100%; Rabbit: 100%; Zebrafish: 100%; Guinea pig: 100%; Mouse: 93%

Product images:

Host: Rabbit

Target Name: GCM2

Sample Tissue: HeLa Cell Lysate

Antibody Dilution: 1.0 µg/ml

Host: Rabbit; Target Name: GCM2; Sample
Tissue: HeLa Whole Cell lysates; Antibody
Dilution: 1.0 µg/ml