

## Product datasheet for TA330912

### DARS1 Rabbit Polyclonal Antibody

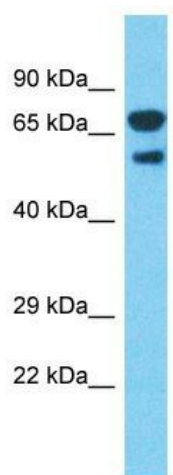
#### Product data:

Product Type:	Primary Antibodies
Applications:	WB
Recommended Dilution:	WB
Reactivity:	Human
Host:	Rabbit
Isotype:	IgG
Clonality:	Polyclonal
Immunogen:	The immunogen for Anti-DARS antibody is: synthetic peptide directed towards the C-terminal region of Human DARS. Synthetic peptide located within the following region: LAVRPFYTMPDPRNPKQSNSYDMFMRGEEILSGAQRHDPQLLTERALHH
Formulation:	Liquid. Purified antibody supplied in 1x PBS buffer with 0.09% (w/v) sodium azide and 2% sucrose. <i>Note that this product is shipped as lyophilized powder to China customers.</i>
Conjugation:	Unconjugated
Storage:	Store at -20°C as received.
Stability:	Stable for 12 months from date of receipt.
Predicted Protein Size:	55 kDa
Gene Name:	aspartyl-tRNA synthetase
Database Link:	<a href="#">NP_001340</a> <a href="#">Entrez Gene 1615 Human P14868</a>
Background:	Aspartyl-tRNA synthetase (DARS) is part of a multienzyme complex of aminoacyl-tRNA synthetases. Aspartyl-tRNA synthetase charges its cognate tRNA with aspartate during protein biosynthesis.
Synonyms:	aspRS; HBSL
Note:	Dog: 100%; Pig: 100%; Rat: 100%; Horse: 100%; Human: 100%; Mouse: 100%; Sheep: 100%; Bovine: 100%; Rabbit: 100%; Guinea pig: 100%; Yeast: 86%; Zebrafish: 86%
Protein Pathways:	Aminoacyl-tRNA biosynthesis



[View online »](#)

## Product images:



Host: Rabbit

Target Name: DARS

Sample Tissue: Fetal Lung Lysate

Antibody Dilution: 1.0µg/ml

Host: Rabbit; Target Name: DARS; Sample Tissue:  
Human Fetal Lung ; Antibody Dilution: 1.0ug/ml