

Product datasheet for **TA330911**

SFI1 Rabbit Polyclonal Antibody

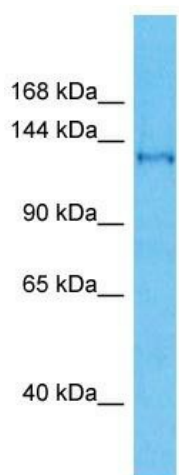
Product data:

Product Type:	Primary Antibodies
Applications:	WB
Recommended Dilution:	WB
Reactivity:	Human
Host:	Rabbit
Isotype:	IgG
Clonality:	Polyclonal
Immunogen:	The immunogen for Anti-SFI1 antibody is: synthetic peptide directed towards the C-terminal region of Human SFI1. Synthetic peptide located within the following region: LELNTAHSARKQPRRPHLLEPAQSQRPKPQEHGLGMAQPAAPSLTRPF
Formulation:	Liquid. Purified antibody supplied in 1x PBS buffer with 0.09% (w/v) sodium azide and 2% sucrose. <i>Note that this product is shipped as lyophilized powder to China customers.</i>
Conjugation:	Unconjugated
Storage:	Store at -20°C as received.
Stability:	Stable for 12 months from date of receipt.
Predicted Protein Size:	133 kDa
Gene Name:	SFI1 centrin binding protein
Database Link:	NP_055590 Entrez Gene 9814 Human A8K8P3
Background:	SFI1 plays a role in the dynamic structure of centrosome-associated contractile fibers via its interaction with CETN2.
Synonyms:	hSfi1p; PISD; PPP1R139
Note:	Human: 100%; Dog: 83%



[View online »](#)

Product images:



Host: Rabbit

Target Name: SF11

Sample Tissue: Jurkat Cell Lysate

Antibody Dilution: 1.0 μ g/ml

Host: Rabbit; Target Name: SF11; Sample Tissue:
Jurkat Whole Cell lysates; Antibody Dilution:
1.0ug/ml