

## Product datasheet for **TA330908**

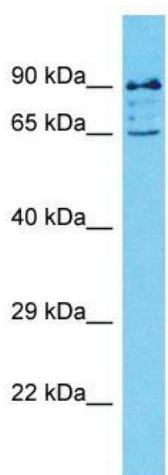
### DET1 Rabbit Polyclonal Antibody

#### Product data:

|                         |  |
|-------------------------|--|
| Product Type:           | Primary Antibodies   |
| Applications:           | WB   |
| Recommended Dilution:   | WB   |
| Reactivity:             | Human  |
| Host:                   | Rabbit   |
| Isotype:                | IgG  |
| Clonality:              | Polyclonal   |
| Immunogen:              | The immunogen for Anti-DET1 antibody is: synthetic peptide directed towards the N-terminal region of Human DET1. Synthetic peptide located within the following region:<br>DCRCVIVGSAAYLPDEPHPPFFEVYRNSESVTPNPRSPLDYSLHIIDLH |
| Formulation:            | Liquid. Purified antibody supplied in 1x PBS buffer with 0.09% (w/v) sodium azide and 2% sucrose.<br><i>Note that this product is shipped as lyophilized powder to China customers.</i>                                      |
| Conjugation:            | Unconjugated   |
| Storage:                | Store at -20°C as received.  |
| Stability:              | Stable for 12 months from date of receipt.   |
| Predicted Protein Size: | 61 kDa   |
| Gene Name:              | de-etiolated homolog 1 (Arabidopsis)   |
| Database Link:          | <a href="#">NP_060466</a><br><a href="#">Entrez Gene 55070 Human</a><br><a href="#">Q7L5Y6</a>   |
| Background:             | DET1 is a component of the E3 ubiquitin ligase DCX DET1-COP1 complex, which is required for ubiquitination and subsequent degradation of target proteins. The complex is involved in JUN ubiquitination and degradation.     |
| Synonyms:               | FLJ10103; MGC126156; MGC126157   |
| Note:                   | Dog: 100%; Pig: 100%; Rat: 100%; Horse: 100%; Human: 100%; Mouse: 100%; Bovine: 100%; Rabbit: 100%; Zebrafish: 100%; Guinea pig: 93%   |
| Protein Pathways:       | Ubiquitin mediated proteolysis   |



[View online »](#)

**Product images:**

Host: Rabbit

Target Name: DET1

Sample Tissue: 293T Cell Lysate

Antibody Dilution: 1.0 $\mu$ g/ml

Host: Rabbit; Target Name: DET1; Sample Tissue: 293T Whole Cell lysates; Antibody Dilution: 1.0 $\mu$ g/ml