

Product datasheet for **TA330907**

NUF2 Rabbit Polyclonal Antibody

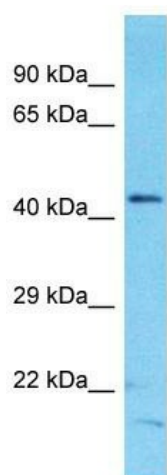
Product data:

Product Type:	Primary Antibodies
Applications:	WB
Recommended Dilution:	WB
Reactivity:	Human
Host:	Rabbit
Isotype:	IgG
Clonality:	Polyclonal
Immunogen:	The immunogen for Anti-NUF2 antibody is: synthetic peptide directed towards the N-terminal region of Human NUF2. Synthetic peptide located within the following region: EVIHIRNKILTGADGKNLTKNDLYPNPKPEVLHMIYMRALQIVYGIRLE
Formulation:	Liquid. Purified antibody supplied in 1x PBS buffer with 0.09% (w/v) sodium azide and 2% sucrose. <i>Note that this product is shipped as lyophilized powder to China customers.</i>
Conjugation:	Unconjugated
Storage:	Store at -20°C as received.
Stability:	Stable for 12 months from date of receipt.
Predicted Protein Size:	45 kDa
Gene Name:	NUF2, NDC80 kinetochore complex component
Database Link:	NP_663735 Entrez Gene 83540 Human Q9BZD4
Background:	The function of this protein remains unknown.
Synonyms:	CDCA1; CT106; NUF2R
Note:	Human: 100%; Pig: 93%; Rat: 93%; Horse: 93%; Rabbit: 93%; Guinea pig: 93%; Dog: 86%; Bovine: 86%
Protein Families:	Druggable Genome



[View online »](#)

Product images:



Host: Rabbit

Target Name: NUF2

Sample Tissue: RPMI-8226 Cell Lysate

Antibody Dilution: 1.0µg/ml

Host: Rabbit; Target Name: NUF2; Sample Tissue:
RPMI-8226 Whole Cell lysates; Antibody Dilution:
1.0ug/ml