

Product datasheet for **TA330905**

Semaphorin 3B (SEMA3B) Rabbit Polyclonal Antibody

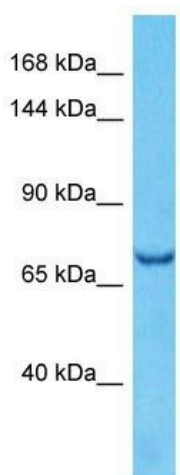
Product data:

Product Type:	Primary Antibodies
Applications:	WB
Recommended Dilution:	WB
Reactivity:	Human
Host:	Rabbit
Isotype:	IgG
Clonality:	Polyclonal
Immunogen:	The immunogen for Anti-SEMA3B antibody is: synthetic peptide directed towards the middle region of Human SEMA3B. Synthetic peptide located within the following region: FRSLGQRPSLRTEPHDSRWLNPKFKVFWIPESENPDDDKIYFFRETA
Formulation:	Liquid. Purified antibody supplied in 1x PBS buffer with 0.09% (w/v) sodium azide and 2% sucrose. <i>Note that this product is shipped as lyophilized powder to China customers.</i>
Conjugation:	Unconjugated
Storage:	Store at -20°C as received.
Stability:	Stable for 12 months from date of receipt.
Predicted Protein Size:	82 kDa
Gene Name:	semaphorin 3B
Database Link:	NP_004627 Entrez Gene 7869 Human Q13214
Background:	SEMA3B inhibits axonal extension by providing local signals to specify territories inaccessible for growing axons.
Synonyms:	LUCA-1; SemA; SEMA5; SEMAA; semaV
Note:	Human: 100%; Rat: 86%; Bovine: 86%; Rabbit: 86%; Dog: 79%; Pig: 79%; Guinea pig: 79%
Protein Families:	Secreted Protein, Transmembrane
Protein Pathways:	Axon guidance



[View online »](#)

Product images:



Host: Rabbit
Target Name: SEMA3B
Sample Tissue: HepG2 Cell Lysate
Antibody Dilution: 1.0µg/ml

Host: Rabbit; Target Name: SEMA3B; Sample
Tissue: HepG2 Whole Cell lysates; Antibody
Dilution: 1.0ug/ml