

Product datasheet for **TA330904**

Nrf2 (NFE2L2) Rabbit Polyclonal Antibody

Product data:

Product Type:	Primary Antibodies
Applications:	WB
Recommended Dilution:	WB
Reactivity:	Human
Host:	Rabbit
Isotype:	IgG
Clonality:	Polyclonal
Immunogen:	The immunogen for Anti-NFE2L2 antibody is: synthetic peptide directed towards the C-terminal region of Human NFE2L2. Synthetic peptide located within the following region: VSDLSLCKAFNQHPESTAEFNDSDSGSLNTSPSVASPEHSVSSSYGD
Formulation:	Liquid. Purified antibody supplied in 1x PBS buffer with 0.09% (w/v) sodium azide and 2% sucrose. <i>Note that this product is shipped as lyophilized powder to China customers.</i>
Conjugation:	Unconjugated
Storage:	Store at -20°C as received.
Stability:	Stable for 12 months from date of receipt.
Predicted Protein Size:	64 kDa
Gene Name:	nuclear factor, erythroid 2 like 2
Database Link:	NP_006155 Entrez Gene 4780 Human Q16236
Background:	This gene encodes a transcription factor which is a member of a small family of basic leucine zipper (bZIP) proteins. The encoded transcription factor regulates genes which contain antioxidant response elements (ARE) in their promoters; many of these genes encode proteins involved in response to injury and inflammation which includes the production of free radicals. Multiple transcript variants encoding different isoforms have been found for this gene.
Synonyms:	NRF2

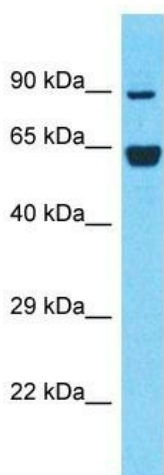


[View online »](#)

Note: Human: 100%; Dog: 93%; Pig: 93%; Rat: 93%; Horse: 93%; Bovine: 93%; Rabbit: 86%; Guinea pig: 85%

Protein Families: Transcription Factors

Product images:



Host: Rabbit
Target Name: NFE2L2
Sample Tissue: HT1080 Cell Lysate
Antibody Dilution: 1.0 μ g/ml

Host: Rabbit; Target Name: NFE2L2; Sample Tissue: HT1080 Whole Cell lysates; Antibody Dilution: 1.0 μ g/ml