

Product datasheet for **TA330901**

PIK3CB Rabbit Polyclonal Antibody

Product data:

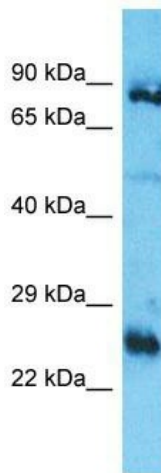
Product Type:	Primary Antibodies
Applications:	WB
Recommended Dilution:	WB
Reactivity:	Human
Host:	Rabbit
Isotype:	IgG
Clonality:	Polyclonal
Immunogen:	The immunogen for Anti-PIK3CB antibody is: synthetic peptide directed towards the N-terminal region of Human PIK3CB. Synthetic peptide located within the following region: ENATALHVKFPENKKQPYYPFDKSRGGKFLPVLKEILDRDPLSQLCE
Formulation:	Liquid. Purified antibody supplied in 1x PBS buffer with 0.09% (w/v) sodium azide and 2% sucrose. <i>Note that this product is shipped as lyophilized powder to China customers.</i>
Conjugation:	Unconjugated
Storage:	Store at -20°C as received.
Stability:	Stable for 12 months from date of receipt.
Predicted Protein Size:	26 kDa
Gene Name:	phosphatidylinositol-4,5-bisphosphate 3-kinase catalytic subunit beta
Database Link:	NP_006210 Entrez Gene 5291 Human P42338
Background:	The function of this protein remains unknown.
Synonyms:	P110BETA; PI3K; PI3KBETA; PIK3C1
Note:	Dog: 100%; Pig: 100%; Rat: 100%; Horse: 100%; Human: 100%; Bovine: 100%; Rabbit: 100%; Mouse: 93%; Guinea pig: 93%
Protein Families:	Druggable Genome



[View online »](#)

Protein Pathways:

Acute myeloid leukemia, Apoptosis, B cell receptor signaling pathway, Chemokine signaling pathway, Chronic myeloid leukemia, Colorectal cancer, Endometrial cancer, ErbB signaling pathway, Fc epsilon RI signaling pathway, Fc gamma R-mediated phagocytosis, Focal adhesion, Glioma, Inositol phosphate metabolism, Insulin signaling pathway, Jak-STAT signaling pathway, Leukocyte transendothelial migration, Melanoma, mTOR signaling pathway, Natural killer cell mediated cytotoxicity, Neurotrophin signaling pathway, Non-small cell lung cancer, Pancreatic cancer, Pathways in cancer, Phosphatidylinositol signaling system, Progesterone-mediated oocyte maturation, Prostate cancer, Regulation of actin cytoskeleton, Renal cell carcinoma, Small cell lung cancer, T cell receptor signaling pathway, Toll-like receptor signaling pathway, Type II diabetes mellitus, VEGF signaling pathway

Product images:

Host: Rabbit

Target Name: PIK3CB

Sample Tissue: ACHN Cell Lysate

Antibody Dilution: 1.0µg/ml

Host: Rabbit; Target Name: PIK3CB; Sample Tissue: ACHN Whole Cell lysates; Antibody Dilution: 1.0ug/ml