

Product datasheet for **TA330900**

PER1 Rabbit Polyclonal Antibody

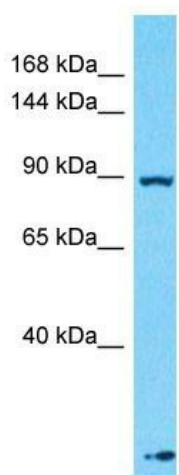
Product data:

Product Type:	Primary Antibodies
Applications:	WB
Recommended Dilution:	WB
Reactivity:	Human
Host:	Rabbit
Isotype:	IgG
Clonality:	Polyclonal
Immunogen:	The immunogen for Anti-PER1 antibody is: synthetic peptide directed towards the N-terminal region of Human PER1. Synthetic peptide located within the following region: LADDTDANSNGSSGNESNGHESRGASQRSSHSSSSGNGKDSALLETTESS
Formulation:	Liquid. Purified antibody supplied in 1x PBS buffer with 0.09% (w/v) sodium azide and 2% sucrose. <i>Note that this product is shipped as lyophilized powder to China customers.</i>
Conjugation:	Unconjugated
Storage:	Store at -20°C as received.
Stability:	Stable for 12 months from date of receipt.
Predicted Protein Size:	90 kDa
Gene Name:	period circadian clock 1
Database Link:	NP_002607 Entrez Gene 5187 Human O15534
Background:	The function of this protein remains unknown.
Synonyms:	hPER; PER; RIGUI
Note:	Pig: 100%; Rat: 100%; Human: 100%; Guinea pig: 100%; Dog: 93%; Horse: 93%; Mouse: 93%; Bovine: 93%
Protein Families:	Druggable Genome
Protein Pathways:	Circadian rhythm - mammal



[View online »](#)

Product images:



Host: Rabbit

Target Name: PER1

Sample Tissue: Fetal Liver Lysate

Antibody Dilution: 1.0 μ g/ml

Host: Rabbit; Target Name: PER1; Sample Tissue: Fetal Liver lysates; Antibody Dilution: 1.0 μ g/ml