

Product datasheet for **TA330899**

XRCC1 Rabbit Polyclonal Antibody

Product data:

Product Type:	Primary Antibodies
Applications:	WB
Recommended Dilution:	WB
Reactivity:	Human
Host:	Rabbit
Isotype:	IgG
Clonality:	Polyclonal
Immunogen:	The immunogen for Anti-XRCC1 antibody is: synthetic peptide directed towards the C-terminal region of Human XRCC1. Synthetic peptide located within the following region: GDTDELRRVAEQKEHRLPPGQEENGEDPYAGSTDENTDSEEHQEPPDLP
Formulation:	Liquid. Purified antibody supplied in 1x PBS buffer with 0.09% (w/v) sodium azide and 2% sucrose. <i>Note that this product is shipped as lyophilized powder to China customers.</i>
Conjugation:	Unconjugated
Storage:	Store at -20°C as received.
Stability:	Stable for 12 months from date of receipt.
Predicted Protein Size:	70 kDa
Gene Name:	X-ray repair complementing defective repair in Chinese hamster cells 1
Database Link:	NP_006288 Entrez Gene 7515 Human P18887
Background:	The protein encoded by this gene is involved in the efficient repair of DNA single-strand breaks formed by exposure to ionizing radiation and alkylating agents. This protein interacts with DNA ligase III, polymerase beta and poly (ADP-ribose) polymerase to participate in the base excision repair pathway. It may play a role in DNA processing during meiosis and recombination in germ cells. A rare microsatellite polymorphism in this gene is associated with cancer in patients of varying radiosensitivity.
Synonyms:	RCC



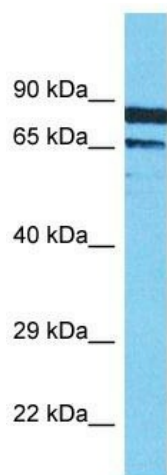
[View online »](#)

Note: Human: 100%

Protein Families: Druggable Genome

Protein Pathways: Base excision repair

Product images:



Host: Rabbit

Target Name: XRCC1

Sample Tissue: MCF7 Cell Lysate

Antibody Dilution: 1.0µg/ml

Host: Rabbit; Target Name: XRCC1; Sample Tissue: MCF7 Whole Cell lysates; Antibody Dilution: 1.0ug/ml