

Product datasheet for **TA330898**

TCF3 / E2A (TCF3) Rabbit Polyclonal Antibody

Product data:

Product Type:	Primary Antibodies
Applications:	WB
Recommended Dilution:	WB
Reactivity:	Human, Mouse
Host:	Rabbit
Isotype:	IgG
Clonality:	Polyclonal
Immunogen:	The immunogen for Anti-TCF3 antibody is: synthetic peptide directed towards the N-terminal region of Human TCF3. Synthetic peptide located within the following region: EDRPSSGSWGSQDQSSSFDPSTFSEGTHTFESHSSLSSTFLGPGLGG
Formulation:	Liquid. Purified antibody supplied in 1x PBS buffer with 0.09% (w/v) sodium azide and 2% sucrose. <i>Note that this product is shipped as lyophilized powder to China customers.</i>
Conjugation:	Unconjugated
Storage:	Store at -20°C as received.
Stability:	Stable for 12 months from date of receipt.
Predicted Protein Size:	71 kDa
Gene Name:	transcription factor 3
Database Link:	NP_003191 Entrez Gene 21423 Mouse Entrez Gene 6929 Human P15923
Background:	TCF3 is a transcriptional regulator. It is involved in the initiation of neuronal differentiation. Heterodimers between TCF3 and tissue-specific basic helix-loop-helix (bHLH) proteins play major roles in determining tissue-specific cell fate during embryogenesis, like muscle or early B-cell differentiation. Dimers bind DNA on E-box motifs: 5'-CANNTG-3'. TCF3 binds to the kappa-E2 site in the kappa immunoglobulin gene enhancer. It binds to IEB1 and IEB2, which are short DNA sequences in the insulin gene transcription control region.
Synonyms:	AGM8; bHLHb21; E2A; E47; ITF1; TCF-3; VDIR

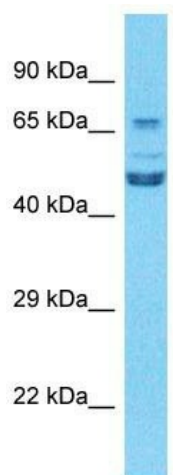


[View online »](#)

Note: Human: 100%; Dog: 86%; Mouse: 86%; Horse: 85%; Rat: 79%

Protein Families: Druggable Genome, ES Cell Differentiation/IPS, Induced pluripotent stem cells, Transcription Factors

Product images:



Host: Rabbit
Target Name: TCF3
Sample Tissue: 786-0 Cell Lysate
Antibody Dilution: 1.0µg/ml

Host: Rabbit; Target Name: TCF3; Sample Tissue: 786-0 Whole Cell lysates; Antibody Dilution: 1.0ug/ml