

## Product datasheet for **TA330896**

### TBX20 Rabbit Polyclonal Antibody

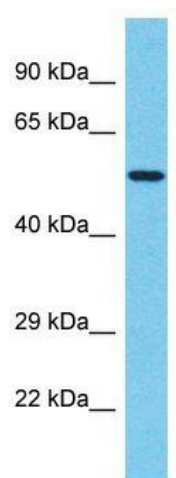
#### Product data:

|                         |  |
|-------------------------|--|
| Product Type:           | Primary Antibodies   |
| Applications:           | WB   |
| Recommended Dilution:   | WB   |
| Reactivity:             | Human  |
| Host:                   | Rabbit   |
| Isotype:                | IgG  |
| Clonality:              | Polyclonal   |
| Immunogen:              | The immunogen for Anti-TBX20 antibody is: synthetic peptide directed towards the C-terminal region of Human TBX20. Synthetic peptide located within the following region:<br>RLGMLPTPSAIASSMQSGPTFPSFHMPRYHHYFQQGPYAAIQGLRHSSA |
| Formulation:            | Liquid. Purified antibody supplied in 1x PBS buffer with 0.09% (w/v) sodium azide and 2% sucrose.<br><i>Note that this product is shipped as lyophilized powder to China customers.</i>  |
| Conjugation:            | Unconjugated   |
| Storage:                | Store at -20°C as received.  |
| Stability:              | Stable for 12 months from date of receipt.   |
| Predicted Protein Size: | 49 kDa   |
| Gene Name:              | T-box 20   |
| Database Link:          | <a href="#">NP_001071121</a><br><a href="#">Entrez Gene 57057 Human</a><br><a href="#">Q9UMR3</a>  |
| Background:             | TBX20 is a member of the T-box transcription factor family expressed in the developing heart, eye, ventral neural tube, and limbs, indicating a possible role in regulating development of these tissues.                      |
| Synonyms:               | ASD4   |
| Note:                   | Dog: 100%; Pig: 100%; Rat: 100%; Horse: 100%; Human: 100%; Mouse: 100%; Bovine: 100%; Rabbit: 100%; Zebrafish: 100%; Guinea pig: 100%  |
| Protein Families:       | Transcription Factors  |



[View online »](#)

## Product images:



Host: Rabbit; Target Name: TBX20; Sample  
Tissue: Jurkat Whole Cell lysates; Antibody  
Dilution: 1.0ug/ml