

Product datasheet for **TA330894**

ZBTB8B Rabbit Polyclonal Antibody

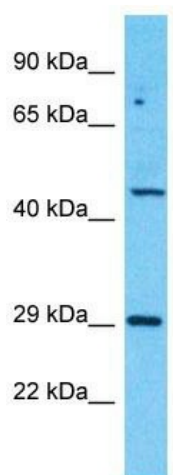
Product data:

Product Type:	Primary Antibodies
Applications:	WB
Recommended Dilution:	WB
Reactivity:	Human
Host:	Rabbit
Isotype:	IgG
Clonality:	Polyclonal
Immunogen:	The immunogen for Anti-ZBTB8B antibody is: synthetic peptide directed towards the C-terminal region of Human ZBTB8B. Synthetic peptide located within the following region: LVEASSESQEKSDTDNDWPIYVESGEENDPAGDDSDDKPQIQPNLSDRET
Formulation:	Liquid. Purified antibody supplied in 1x PBS buffer with 0.09% (w/v) sodium azide and 2% sucrose.
Conjugation:	Unconjugated
Storage:	Store at -20°C as received.
Stability:	Stable for 12 months from date of receipt.
Predicted Protein Size:	54 kDa
Gene Name:	zinc finger and BTB domain containing 8B
Database Link:	NP_001139192 Entrez Gene 728116 Human Q8NAP8
Background:	ZBTB8B may be involved in transcriptional regulation.
Synonyms:	ZNF916B
Note:	Human: 100%; Dog: 93%; Rat: 86%; Horse: 86%; Rabbit: 86%; Pig: 79%; Mouse: 79%; Guinea pig: 79%



[View online »](#)

Product images:



Host: Rabbit
Target Name: ZBTB8B
Sample Tissue: MCF7 Cell Lysate
Antibody Dilution: 1.0µg/ml

Host: Rabbit; Target Name: ZBTB8B; Sample
Tissue: MCF7 Whole Cell lysates; Antibody
Dilution: 1.0ug/ml