

## Product datasheet for **TA330893**

### ZCCHC18 Rabbit Polyclonal Antibody

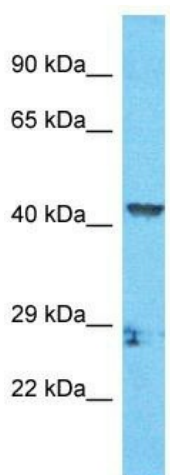
#### Product data:

Product Type:	Primary Antibodies
Applications:	WB
Recommended Dilution:	WB
Reactivity:	Human
Host:	Rabbit
Isotype:	IgG
Clonality:	Polyclonal
Immunogen:	The immunogen for Anti-ZCCHC18 antibody is: synthetic peptide directed towards the C-terminal region of Human ZCCHC18. Synthetic peptide located within the following region: SGGSGYKNDGPGNIRRARKRKYTTRCSYCGEESHKTCDNESNKAQVFE
Formulation:	Liquid. Purified antibody supplied in 1x PBS buffer with 0.09% (w/v) sodium azide and 2% sucrose. <i>Note that this product is shipped as lyophilized powder to China customers.</i>
Conjugation:	Unconjugated
Storage:	Store at -20°C as received.
Stability:	Stable for 12 months from date of receipt.
Predicted Protein Size:	44 kDa
Gene Name:	zinc finger CCHC-type containing 18
Database Link:	<a href="#">NP_001137450</a> <a href="#">Entrez Gene 644353 Human</a> <a href="#">P0CG32</a>
Background:	The function of this protein remains unknown.
Synonyms:	PNMA7B; SIZN2
Note:	Pig: 100%; Human: 100%; Bovine: 100%; Rabbit: 100%; Guinea pig: 100%; Dog: 93%; Horse: 93%; Rat: 86%; Mouse: 86%



[View online »](#)

## Product images:



Host: Rabbit  
Target Name: ZCCHC18  
Sample Tissue: HCT15 Cell Lysate  
Antibody Dilution: 1.0 $\mu$ g/ml

Host: Rabbit; Target Name: ZCCHC18; Sample  
Tissue: HCT15 Whole Cell lysates; Antibody  
Dilution: 1.0 $\mu$ g/ml