

## Product datasheet for **TA330892**

### ZNF286 (ZNF286A) Rabbit Polyclonal Antibody

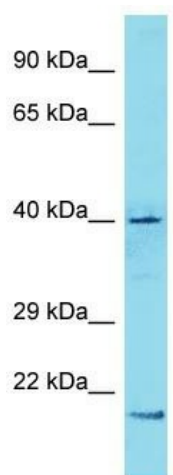
#### Product data:

Product Type:	Primary Antibodies
Applications:	WB
Recommended Dilution:	WB
Reactivity:	Human
Host:	Rabbit
Isotype:	IgG
Clonality:	Polyclonal
Immunogen:	The immunogen for Anti-ZNF286A antibody is: synthetic peptide directed towards the N-terminal region of Human ZNF286A. Synthetic peptide located within the following region: KSNLMKKQRTYKEKKPHKCNDCCGELFTYHSVLIRHQRVHTGKPYTCNEC
Formulation:	Liquid. Purified antibody supplied in 1x PBS buffer with 0.09% (w/v) sodium azide and 2% sucrose. <i>Note that this product is shipped as lyophilized powder to China customers.</i>
Conjugation:	Unconjugated
Storage:	Store at -20°C as received.
Stability:	Stable for 12 months from date of receipt.
Predicted Protein Size:	44 kDa
Gene Name:	zinc finger protein 286A
Database Link:	<a href="#">NP_065703</a> <a href="#">Entrez Gene 57335 Human Q9HBT8</a>
Background:	The function of this protein remains unknown.
Synonyms:	ZNF286
Note:	Pig: 100%; Rat: 100%; Horse: 100%; Human: 100%; Bovine: 100%; Guinea pig: 100%; Dog: 93%; Rabbit: 93%; Mouse: 86%
Protein Families:	Transcription Factors



[View online »](#)

## Product images:



Host: Rabbit  
Target Name: ZNF286A  
Sample Tissue: 786-0 Cell Lysate  
Antibody Dilution: 1.0 $\mu$ g/ml

Host: Rabbit; Target Name: ZNF286A; Sample  
Tissue: 786-0 Whole Cell lysates; Antibody  
Dilution: 1.0ug/ml