

Product datasheet for **TA330890**

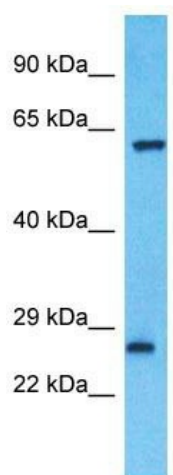
ZNF680 Rabbit Polyclonal Antibody

Product data:

Product Type:	Primary Antibodies
Applications:	WB
Recommended Dilution:	WB
Reactivity:	Human
Host:	Rabbit
Isotype:	IgG
Clonality:	Polyclonal
Immunogen:	The immunogen for Anti-ZNF680 antibody is: synthetic peptide directed towards the middle region of Human ZNF680. Synthetic peptide located within the following region: IRIHTRENSYKCEECEGKVLNWFSELIKHKGIHMGEKPYKCEECEGKAFNQS
Formulation:	Liquid. Purified antibody supplied in 1x PBS buffer with 0.09% (w/v) sodium azide and 2% sucrose. <i>Note that this product is shipped as lyophilized powder to China customers.</i>
Conjugation:	Unconjugated
Storage:	Store at -20°C as received.
Stability:	Stable for 12 months from date of receipt.
Predicted Protein Size:	58 kDa
Gene Name:	zinc finger protein 680
Database Link:	NP_848653 Entrez Gene 340252 Human Q8NEM1
Background:	ZNF680 belongs to the krueppel C2H2-type zinc-finger protein family. It contains 12 C2H2-type zinc fingers and 1 KRAB domain. ZNF680 may be involved in transcriptional regulation.
Synonyms:	FLJ90430
Note:	Human: 100%
Protein Families:	Transcription Factors



[View online »](#)

Product images:

Host: Rabbit
Target Name: ZNF680
Sample Tissue: Jurkat Cell Lysate
Antibody Dilution: 1.0 μ g/ml

Host: Rabbit; Target Name: ZNF680; Sample Tissue: Jurkat Whole Cell lysates; Antibody Dilution: 1.0ug/ml