

Product datasheet for **TA330883**

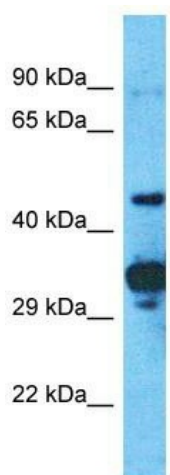
PRAMEF2 Rabbit Polyclonal Antibody

Product data:

Product Type:	Primary Antibodies
Applications:	WB
Recommended Dilution:	WB
Reactivity:	Human
Host:	Rabbit
Isotype:	IgG
Clonality:	Polyclonal
Immunogen:	The immunogen for Anti-PRAMEF2 antibody is: synthetic peptide directed towards the C-terminal region of Human PRAMEF2. Synthetic peptide located within the following region: VRVNWEIFTPLRAELMCTLREFRQPKRIFIGTPCPCSSPSEELHL
Formulation:	Liquid. Purified antibody supplied in 1x PBS buffer with 0.09% (w/v) sodium azide and 2% sucrose. <i>Note that this product is shipped as lyophilized powder to China customers.</i>
Conjugation:	Unconjugated
Storage:	Store at -20°C as received.
Stability:	Stable for 12 months from date of receipt.
Predicted Protein Size:	52 kDa
Gene Name:	PRAME family member 2
Database Link:	NP_075390 Entrez Gene 65122 Human O60811
Background:	The function of this protein remains unknown.
Synonyms:	DJ845024.3
Note:	Human: 100%



[View online »](#)

Product images:

Host: Rabbit

Target Name: PRAMEF2

Sample Tissue: OVCAR-3 Cell Lysate

Antibody Dilution: 1.0 μ g/ml

Host: Rabbit; Target Name: PRAMEF2; Sample Tissue: OVCAR-3 Whole Cell lysates; Antibody Dilution: 1.0ug/ml