

## Product datasheet for **TA330881**

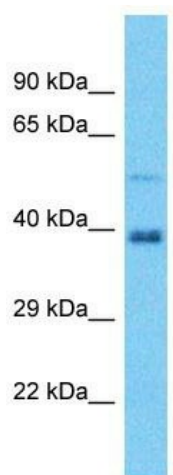
### NEURL1B Rabbit Polyclonal Antibody

#### Product data:

Product Type:	Primary Antibodies
Applications:	WB
Recommended Dilution:	WB
Reactivity:	Human
Host:	Rabbit
Isotype:	IgG
Clonality:	Polyclonal
Immunogen:	The immunogen for Anti-NEURL1B antibody is: synthetic peptide directed towards the C-terminal region of Human NEURL1B. Synthetic peptide located within the following region: GQLRLLGTLQSSPATTPSGSLSGSQDDSDSDMTFSVNQSSASESSLVT
Formulation:	Liquid. Purified antibody supplied in 1x PBS buffer with 0.09% (w/v) sodium azide and 2% sucrose.
Conjugation:	Unconjugated
Storage:	Store at -20°C as received.
Stability:	Stable for 12 months from date of receipt.
Predicted Protein Size:	41 kDa
Gene Name:	neuralized E3 ubiquitin protein ligase 1B
Database Link:	<a href="#">NP_001136123</a> <a href="#">Entrez Gene 54492 Human</a> <a href="#">A8MQ27</a>
Background:	NEURL1B is an E3 ubiquitin-protein ligase involved in regulation of the Notch pathway through influencing the stability and activity of several Notch ligands.
Synonyms:	hNeur2; neur2; NEURL3
Note:	Dog: 100%; Human: 100%; Pig: 93%; Rat: 93%; Bovine: 93%; Rabbit: 93%; Guinea pig: 93%; Mouse: 92%



[View online »](#)

**Product images:**

Host: Rabbit

Target Name: NEURL1B

Sample Tissue: MCF7 Cell Lysate

Antibody Dilution: 1.0µg/ml

Host: Rabbit; Target Name: NEURL1B; Sample  
Tissue: MCF7 Whole Cell lysates; Antibody  
Dilution: 1.0ug/ml