

Product datasheet for **TA330879**

galectin 9 (LGALS9) Rabbit Polyclonal Antibody

Product data:

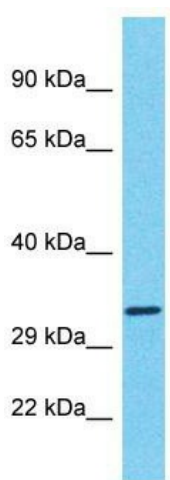
Product Type:	Primary Antibodies
Applications:	WB
Recommended Dilution:	WB
Reactivity:	Human
Host:	Rabbit
Isotype:	IgG
Clonality:	Polyclonal
Immunogen:	The immunogen for Anti-LGALS9 antibody is: synthetic peptide directed towards the middle region of Human LGALS9. Synthetic peptide located within the following region: YVVCNTRQNGSWGPEERKTHMPFQKGMPFDLCFLVQSSDFKVMVNGILFV
Formulation:	Liquid. Purified antibody supplied in 1x PBS buffer with 0.09% (w/v) sodium azide and 2% sucrose. <i>Note that this product is shipped as lyophilized powder to China customers.</i>
Conjugation:	Unconjugated
Storage:	Store at -20°C as received.
Stability:	Stable for 12 months from date of receipt.
Predicted Protein Size:	35 kDa
Gene Name:	galectin 9
Database Link:	NP_002299 Entrez Gene 3965 Human O00182
Background:	The galectins are a family of beta-galactoside-binding proteins implicated in modulating cell-cell and cell-matrix interactions. LGALS9 is an S-type lectin. It is overexpressed in Hodgkin's disease tissue and might participate in the interaction between the H&RS cells with their surrounding cells and might thus play a role in the pathogenesis of this disease and/or its associated immunodeficiency.
Synonyms:	HUAT; LGALS9A



[View online »](#)

Note: Goat: 100%; Human: 100%; Rat: 86%; Dog: 79%; Pig: 79%; Horse: 79%; Mouse: 79%; Bovine: 79%; Rabbit: 79%; Guinea pig: 79%

Product images:



Host: Rabbit

Target Name: LGALS9

Sample Tissue: HCT15 Cell Lysate

Antibody Dilution: 1.0µg/ml

Host: Rabbit; Target Name: LGALS9; Sample Tissue: HCT15 Whole Cell lysates; Antibody Dilution: 1.0ug/ml