

Product datasheet for **TA330877**

KLLN Rabbit Polyclonal Antibody

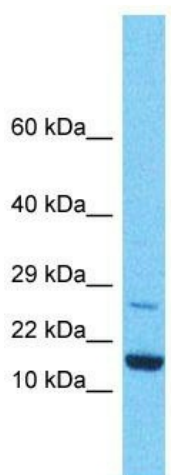
Product data:

Product Type:	Primary Antibodies
Applications:	WB
Recommended Dilution:	WB
Reactivity:	Human
Host:	Rabbit
Isotype:	IgG
Clonality:	Polyclonal
Immunogen:	The immunogen for Anti-KLLN antibody is: synthetic peptide directed towards the C-terminal region of Human KLLN. Synthetic peptide located within the following region: LGNWLHKHPNTPCRLPACWLPPILTERGERVPKLVPLLACYPKSKPKD
Formulation:	Liquid. Purified antibody supplied in 1x PBS buffer with 0.09% (w/v) sodium azide and 2% sucrose. <i>Note that this product is shipped as lyophilized powder to China customers.</i>
Conjugation:	Unconjugated
Storage:	Store at -20°C as received.
Stability:	Stable for 12 months from date of receipt.
Predicted Protein Size:	19 kDa
Gene Name:	killin, p53-regulated DNA replication inhibitor
Database Link:	NP_001119521 Entrez Gene 100144748 Human B2CW77
Background:	The protein encoded by this intronless gene is found in the nucleus, where it can inhibit DNA synthesis and promote S phase arrest coupled to apoptosis. The expression of this DNA binding protein is upregulated by transcription factor p53.
Synonyms:	CWS4; KILLIN
Note:	Human: 100%



[View online »](#)

Product images:



Host: Rabbit
Target Name: KLLN
Sample Tissue: HeLa Cell Lysate
Antibody Dilution: 1.0µg/ml

Host: Rabbit; Target Name: KLLN; Sample Tissue:
HeLa Whole Cell lysates; Antibody Dilution:
1.0ug/ml