

## Product datasheet for **TA330876**

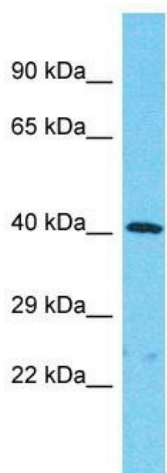
### **LCHN (KIAA1147) Rabbit Polyclonal Antibody**

#### **Product data:**

Product Type:	Primary Antibodies
Applications:	WB
Recommended Dilution:	WB
Reactivity:	Human
Host:	Rabbit
Isotype:	IgG
Clonality:	Polyclonal
Immunogen:	The immunogen for Anti-KIAA1147 antibody is: synthetic peptide directed towards the C-terminal region of Human KIAA1147. Synthetic peptide located within the following region: TTEKIFEEKRELYDVYVDNQNVKTHHDHLQPLLKINSADREKYRRLNEQR
Formulation:	Liquid. Purified antibody supplied in 1x PBS buffer with 0.09% (w/v) sodium azide and 2% sucrose.
Conjugation:	Unconjugated
Storage:	Store at -20°C as received.
Stability:	Stable for 12 months from date of receipt.
Predicted Protein Size:	38 kDa
Gene Name:	KIAA1147
Database Link:	<a href="#">NP_001073861</a> <a href="#">Entrez Gene 57189 Human</a> <a href="#">A4D1U4</a>
Background:	The function of this protein remains unknown.
Synonyms:	LCHN; PRO2561
Note:	Dog: 100%; Pig: 100%; Rat: 100%; Horse: 100%; Human: 100%; Mouse: 100%; Bovine: 100%; Rabbit: 100%; Guinea pig: 100%; Zebrafish: 91%



[View online »](#)

**Product images:**

Host: Rabbit

Target Name: KIAA1147

Sample Tissue: RPMI-8226 Cell Lysate

Antibody Dilution: 1.0µg/ml

Host: Rabbit; Target Name: KIAA1147; Sample  
Tissue: RPMI-8226 Whole Cell lysates; Antibody  
Dilution: 1.0ug/ml