

Product datasheet for **TA330875**

HEATR7A (MROH1) Rabbit Polyclonal Antibody

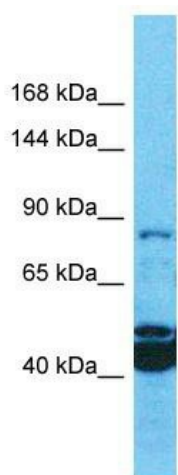
Product data:

Product Type:	Primary Antibodies
Applications:	WB
Recommended Dilution:	WB
Reactivity:	Human
Host:	Rabbit
Isotype:	IgG
Clonality:	Polyclonal
Immunogen:	The immunogen for Anti-MROH1 antibody is: synthetic peptide directed towards the N-terminal region of Human MROH1. Synthetic peptide located within the following region: RAAVLRAMERVLSSRASSELDKDTASTIILLASSEMTKTKDLVWDWQQAAS
Formulation:	Liquid. Purified antibody supplied in 1x PBS buffer with 0.09% (w/v) sodium azide and 2% sucrose. <i>Note that this product is shipped as lyophilized powder to China customers.</i>
Conjugation:	Unconjugated
Storage:	Store at -20°C as received.
Stability:	Stable for 12 months from date of receipt.
Predicted Protein Size:	46 kDa
Gene Name:	maestro heat like repeat family member 1
Database Link:	NP_001092751 Entrez Gene 727957 Human Q8NDA8
Background:	The function of this protein remains unknown.
Synonyms:	HEATR7A
Note:	Human: 100%; Horse: 86%; Rat: 85%; Bovine: 79%; Dog: 77%; Pig: 77%; Mouse: 77%; Guinea pig: 77%
Protein Families:	Druggable Genome



[View online »](#)

Product images:



Host: Rabbit
Target Name: MROH1
Sample Tissue: OVCAR-3 Cell Lysate
Antibody Dilution: 1.0 μ g/ml

Host: Rabbit; Target Name: MROH1; Sample
Tissue: OVCAR-3 Whole Cell lysates; Antibody
Dilution: 1.0 μ g/ml